

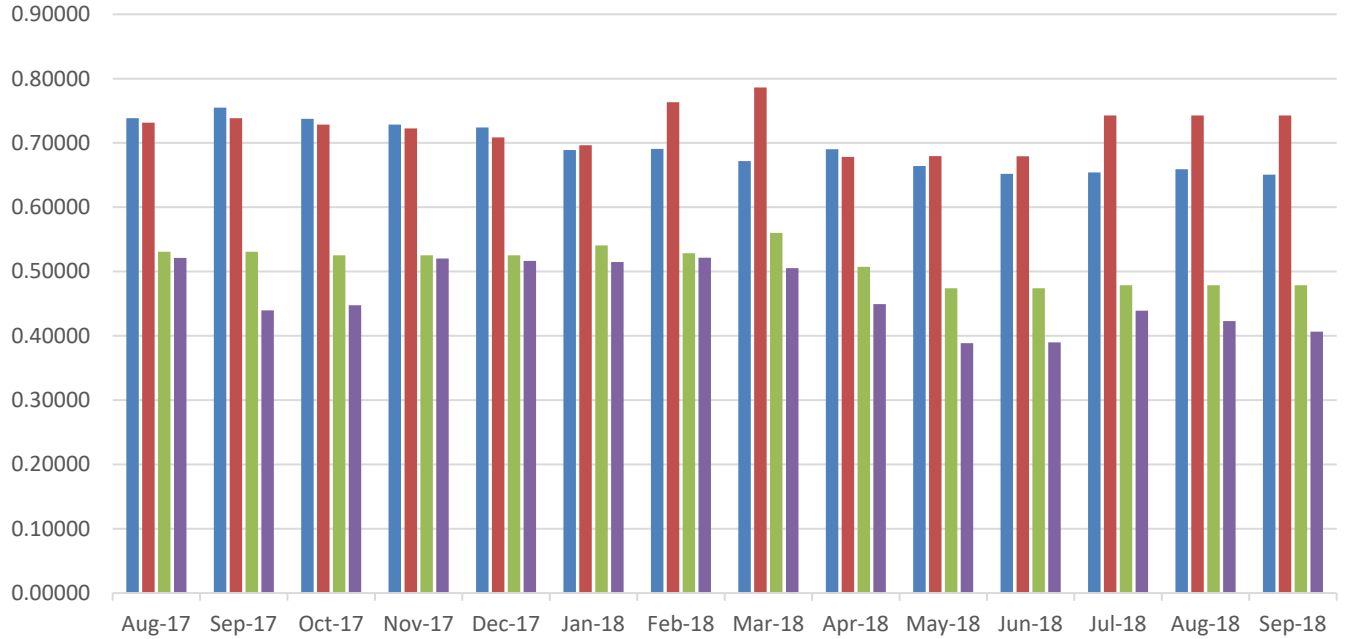
2018 Residential Rate Summary

(Information gathered from tariffs filed and processed as of the 1st day of each month)

	NWE Gas (therm)	BSG/NWE Gas (therm)	MDU Gas (dkt)	EWM Gas (ccf)	NWE Electric (kwh)	MDU Electric (kwh)
January						
Total Rate	\$.6888093	\$.6964623	\$5.4065	\$.45882	\$.11327	\$.077466
Supply Rate	\$.261347	\$.2690 **	\$4.193	\$.19951	\$.066687	\$.02414
Service Chg	\$5.65/month	NWE	\$.23/day	\$7.25/month	\$4.10/month	\$.17/day
February						
Total Rate	\$.6907293	\$.7632623	\$5.2835	\$.4648	\$.112605	\$.078386
Supply Rate	\$.263267	\$.3358 **	\$4.07	\$.20571	\$.066602	\$.02506
Service Chg	\$5.65/month	NWE	\$.23/day	\$7.25/month	\$4.10/month	\$.17/day
March						
Total Rate	\$.6718293	\$.7862623	\$5.6015	\$.45025	\$.113433	\$.078356
Supply Rate	\$.244367	\$.3588 **	\$4.388	\$.19482	\$.06743	\$.02503
Service Chg	\$5.65/month	NWE	\$.23/day	\$7.25/month	\$4.10/month	\$.17/day
April						
Total Rate	\$.6901661	\$.6780891	\$5.0725	\$.40055	\$.113086	\$.079156
Supply Rate	\$.276977	\$.2649 **	\$3.859	\$.14546	\$.067083	\$.02583
Service Chg	\$6.50/month	NWE	\$.23/day	\$7.25/month	\$4.10/month	\$.17/day
May						
Total Rate	\$.6641061	\$.6793891	\$4.7405	\$.3463	\$.113043	\$.077286
Supply Rate	\$.250917	\$.2662 **	\$3.527	\$.09168	\$.06704	\$.02396
Service Chg	\$6.50/month	NWE	\$.23/day	\$7.25/month	\$4.10/month	\$.17/day
June						
Total Rate	\$.6518585	\$.6791115	\$4.7405	\$.34755	\$.11282	\$.097576
Supply Rate	\$.238947	\$.2662 **	\$3.527	\$.0955	\$.066817	\$.0228
Service Chg	\$6.50/month	NWE	\$.23/day	\$7.25/month	\$4.10/month	\$.17/day
July						
Total Rate	\$.6541143	\$.7426973	\$4.7855	\$.39132	\$.110643	\$.097626
Supply Rate	\$.238717	\$.3273**	\$3.672	\$.13907	\$.066211	\$.02285
Service Chg	\$6.50/month	NWE	\$.26/day	\$7.25/month	\$4.10/month	\$.17/day
August						
Total Rate	\$.6590743	\$.7426973	\$4.7855	\$.37688	\$.111053	\$.096966
Supply Rate	\$.243677	\$.3273**	\$3.672	\$.12425	\$.066621	\$.02219
Service Chg	\$6.50/month	NWE	\$.26/day	\$7.25/month	\$4.10/month	\$.17/day
September						
Total Rate	\$.6506553	\$.7426973	\$4.7855	\$.36235	\$.111746	\$.099006
Supply Rate	\$.235258	\$.3273 **	\$3.672	\$.10818	\$.067314	\$.02423
Service Chg	\$6.50/month	NWE	\$.26/day	\$7.25/month	\$4.10/month	\$.17/day
October						
Total Rate	\$	\$	\$	\$	\$	\$
Supply Rate	\$	\$ **	\$	\$	\$	\$
Service Chg	\$/month	NWE	\$/day	\$/month	\$/month	\$/day
November						
Total Rate	\$	\$	\$	\$	\$	\$
Supply Rate	\$	\$ **	\$	\$	\$	\$
Service Chg	\$/month	NWE	\$/day	\$/month	\$/month	\$/day
December						
Total Rate	\$	\$	\$	\$	\$	\$
Supply Rate	\$	\$ **	\$	\$	\$	\$
Service Chg	\$/month	NWE	\$/day	\$/month	\$/month	\$/day

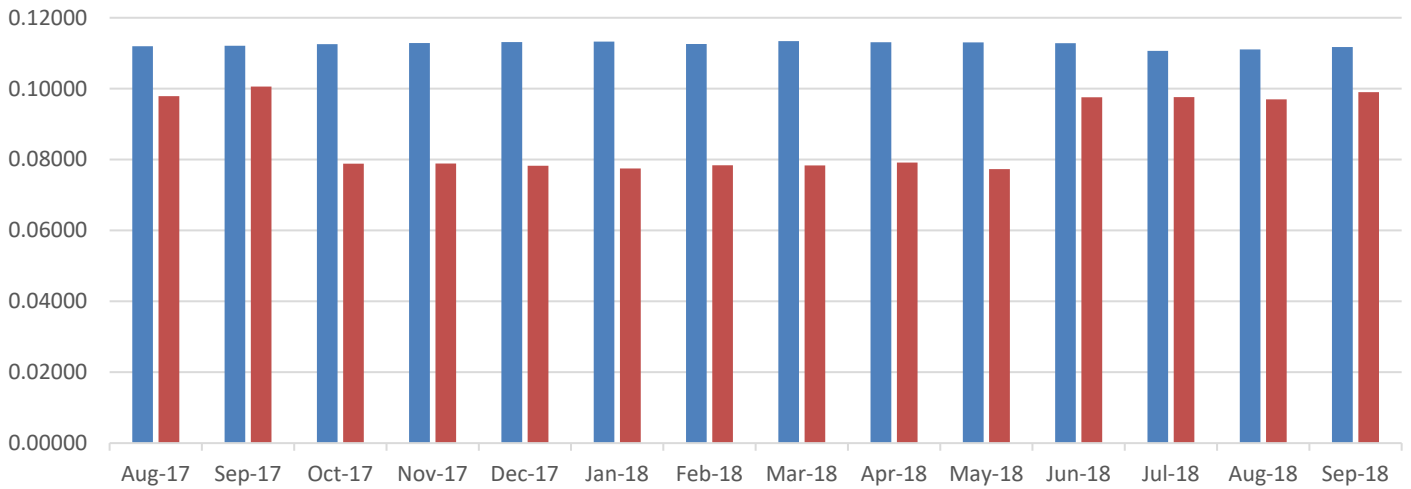
** This is a 12-month term commitment rate – other rates also available

Total Natural Gas Rate in Therms



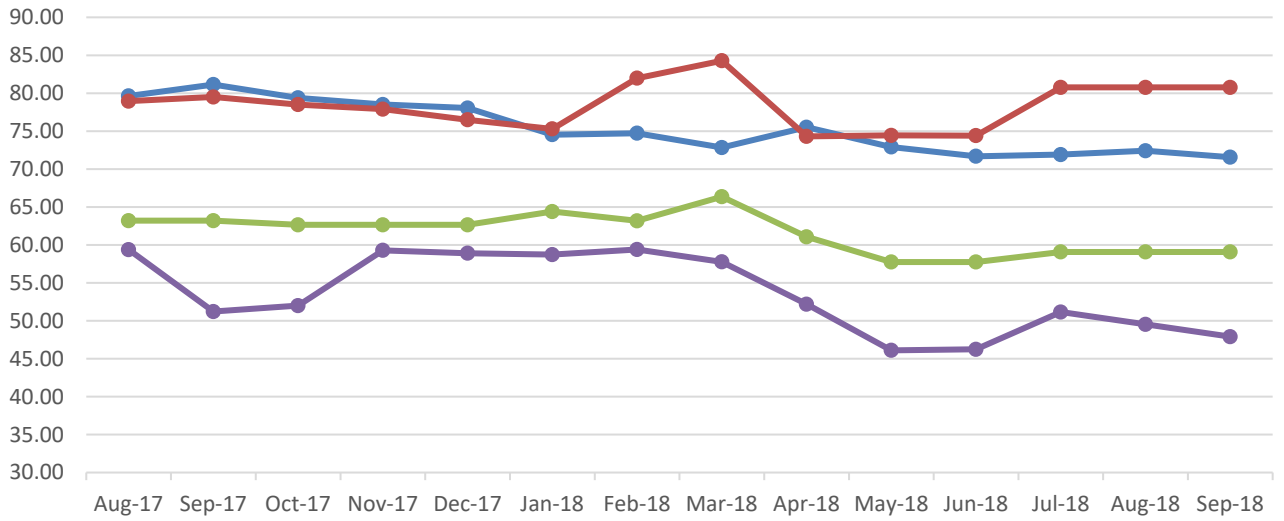
	Aug-17	Sep-17	Oct-17	Nov-17	Dec-17	Jan-18	Feb-18	Mar-18	Apr-18	May-18	Jun-18	Jul-18	Aug-18	Sep-18
NWE	0.73844	0.75489	0.73743	0.72858	0.72400	0.68881	0.69073	0.67183	0.69017	0.66411	0.65186	0.65411	0.65907	0.65066
BSG/NWE	0.73153	0.73848	0.72848	0.72248	0.70848	0.69646	0.76326	0.78626	0.67809	0.67939	0.67911	0.74270	0.74270	0.74270
MDU	0.53065	0.53065	0.52515	0.52515	0.52515	0.54065	0.52835	0.56015	0.50725	0.47405	0.47405	0.47855	0.47855	0.47855
Energy West	0.52132	0.43971	0.44746	0.52034	0.51654	0.51479	0.52150	0.50518	0.44941	0.38854	0.38995	0.43906	0.42285	0.40655

Total Electric Rate in kWh



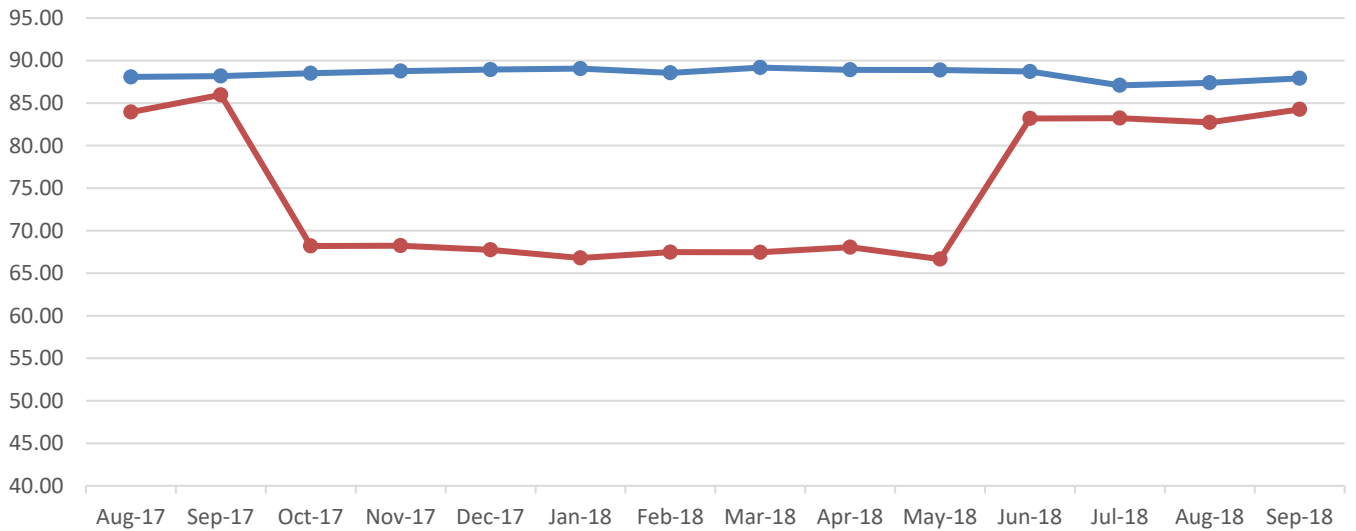
	Aug-17	Sep-17	Oct-17	Nov-17	Dec-17	Jan-18	Feb-18	Mar-18	Apr-18	May-18	Jun-18	Jul-18	Aug-18	Sep-18
NWE	0.11195	0.11211	0.11255	0.11288	0.11312	0.11327	0.11261	0.11343	0.11309	0.11304	0.11282	0.11064	0.11105	0.11175
MDU	0.09788	0.10059	0.07884	0.07888	0.07823	0.07747	0.07839	0.07836	0.07916	0.07729	0.09758	0.09763	0.09697	0.09901

Average Bill - Natural Gas Assume 30 days/100 therms



	Aug-17	Sep-17	Oct-17	Nov-17	Dec-17	Jan-18	Feb-18	Mar-18	Apr-18	May-18	Jun-18	Jul-18	Aug-18	Sep-18
NWE	79.64	81.14	79.39	78.51	78.05	74.53	74.72	72.83	75.52	72.91	71.69	71.91	72.41	71.57
BSG/NWE	78.95	79.50	78.50	77.90	76.50	75.30	81.98	84.28	74.31	74.44	74.41	80.77	80.77	80.77
MDU	63.20	63.20	62.65	62.65	62.65	64.40	63.17	66.35	61.06	57.74	57.74	59.08	59.08	59.08
Energy West	59.38	51.22	52.00	59.28	58.90	58.73	59.40	57.77	52.19	46.10	46.24	51.16	49.53	47.91

Average Bill - Electric Assume 30 days/750 kwh



	Aug-17	Sep-17	Oct-17	Nov-17	Dec-17	Jan-18	Feb-18	Mar-18	Apr-18	May-18	Jun-18	Jul-18	Aug-18	Sep-18
NWE	88.07	88.18	88.51	88.76	88.94	89.05	88.55	89.17	88.91	88.88	88.72	87.08	87.39	87.91
MDU	83.94	85.97	68.20	68.23	67.74	66.79	67.48	67.45	68.05	66.65	83.19	83.23	82.73	84.26

NOTES AND DISCLAIMERS:

This document reflects rates shown on tariffs filed and processed for each utility as of the first day of the month. If a company does not have tariffs on file with this office the rates are verified with an employee of that company. Mid-month changes are not reflected here.

Gas supply rates for each company may include transportation and storage costs from other parties. The supply rates as shown on this document do not include any deferred supply rates.

Montana Dakota Utilities (MDU) electric power supply costs consist of fuel used in its generating stations, energy purchases from MISO and a seasonal capacity contract.

MDU electric bills are assessed a .331% surcharge on the basic service charge, energy, and demand components of the total bill to recover an undercollection in the PSC and MCC funding fees (for a 3-year period from April 2016).

MDU electric bills are assessed a tax tracking adjustment of 7.8407% on the basic service charge, energy charge, and demand charge components of the total bill.

NorthWestern Energy (NWE) electric supply rate includes the cap-ex rate base value of its owned generation.

NWE electric supply rate includes Federal production tax credits for wind resources.

MDU gas bills are assessed a tax tracker adjustment of 18.8573% on the basic service charge and distribution delivery charge components of the total bill.

NWE gas cost includes the Battle Creek, Bear Paw, and Devon revenue requirements (update 11/2013).

Big Sky Gas (BSG) offers residential supply rates based on term commitments ranging from 12 to 36 months. Those term commitments include a cancellation fee if service is discontinued before the end of the term. This document uses their 12-month rate. Customers previously enrolled in a variable rate plan continue to be served on a variable rate until such time as they switch to a term rate. New customers are required to select a term commitment rate.

SOURCES:

NWE: <http://www.northwesternenergy.com/account-services/whats-included-in-your-total-bill/tariffs-and-rates/montana-tariffs-and-rates>

BSG: <http://www.bigskygas.com> and Big Sky Gas employee verification

MDU: <https://www.montana-dakota.com/rates-and-services/rates-tariffs>

Energy West: <http://www.ewst.com>