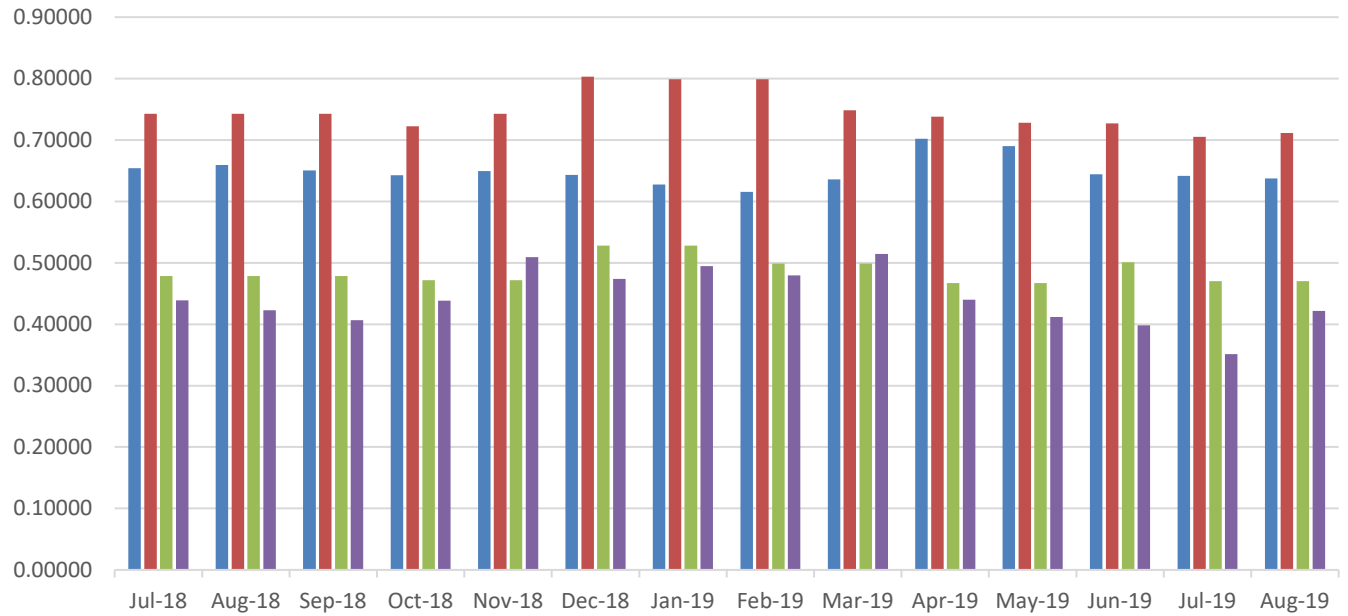


2019 Residential Rate Summary
(as of the 1st day of each month)

	NWE Gas (therm)	Big Sky Gas (therm)	MDU Gas (dkt)	EWM Gas (ccf)	NWE Electric (kwh)	MDU Electric (kwh)
January						
Total Rate	\$.6272508	\$.7989098	\$5.2815	\$.44106	\$.113189	\$.081486
Supply Rate	\$.216241	\$.3879 **	\$4.168	\$.18546	\$.06689	\$.02816
Service Chg	\$6.50/month	NWE	\$.26/day	\$7.25/month	\$4.10/month	\$.17/day
February						
Total Rate	\$.6157408	\$.7989098	\$4.9875	\$.42734	\$.113189	\$.081436
Supply Rate	\$.204731	\$.3879 **	\$3.874	\$.18915	\$.06689	\$.02811
Service Chg	\$6.50/month	NWE	\$.26/day	\$7.25/month	\$4.10/month	\$.17/day
March						
Total Rate	\$.6359008	\$.7481098	\$4.9875	\$.45830	\$.113189	\$.081536
Supply Rate	\$.224891	\$.3371 **	\$3.874	\$.20557	\$.06689	\$.02821
Service Chg	\$6.50/month	NWE	\$.26/day	\$7.25/month	\$4.10/month	\$.17/day
April						
Total Rate	\$.7017608	\$.7377098	\$4.6695	\$.39231	\$.114847	\$.0926662
Supply Rate	\$.290751	\$.3267 **	\$3.556	\$.13982	\$.06689	\$.02901
Service Chg	\$6.50/month	NWE	\$.26/day	\$7.25/month	\$4.25/month	\$.204/day
May						
Total Rate	\$.6897608	\$.7279098	\$4.6695	\$.36679	\$.114847	\$.0904962
Supply Rate	\$.278751	\$.3169 **	\$3.556	\$.1145	\$.06689	\$.02684
Service Chg	\$6.50/month	NWE	\$.26/day	\$7.25/month	\$4.25/month	\$.204/day
June						
Total Rate	\$.6439954	\$.7269644	\$5.0075	\$.35505	\$.114847	\$.1150772
Supply Rate	\$.235631	\$.3186 **	\$3.894	\$.10115	\$.06689	\$.02569
Service Chg	\$6.50/month	NWE	\$.26/day	\$7.25/month	\$4.25/month	\$.204/day
July						
Total Rate	\$.6417382	\$.7052372	\$4.6995	\$.31306	\$.114982	\$.1151372
Supply Rate	\$.234101	\$.2976 **	\$3.586	\$.07105	\$.06689	\$.02575
Service Chg	\$6.50/month	NWE	\$.26/day	\$7.25/month	\$4.25/month	\$.204/day
August						
Total Rate	\$.6371682	\$.71124	\$4.6995	\$.3756	\$.114982	\$.1120872
Supply Rate	\$.229531	\$.3036 **	\$3.586	\$.12168	\$.06689	\$.0227
Service Chg	\$6.50/month	NWE	\$.26/day	\$7.25/month	\$4.25/month	\$.204/day
September						
Total Rate	\$	\$	\$	\$	\$	\$
Supply Rate	\$	\$ **	\$	\$	\$	\$
Service Chg	\$/month	NWE	\$/day	\$/month	\$/month	\$/day
October						
Total Rate	\$	\$	\$	\$	\$	\$
Supply Rate	\$	\$ **	\$	\$	\$	\$
Service Chg	\$/month	NWE	\$/day	\$/month	\$/month	\$/day
November						
Total Rate	\$	\$	\$	\$	\$	\$
Supply Rate	\$	\$ **	\$	\$	\$	\$
Service Chg	\$/month	NWE	\$/day	\$/month	\$/month	\$/day
December						
Total Rate	\$	\$	\$	\$	\$	\$
Supply Rate	\$	\$ **	\$	\$	\$	\$
Service Chg	\$/month	NWE	\$/day	\$/month	\$/month	\$/day

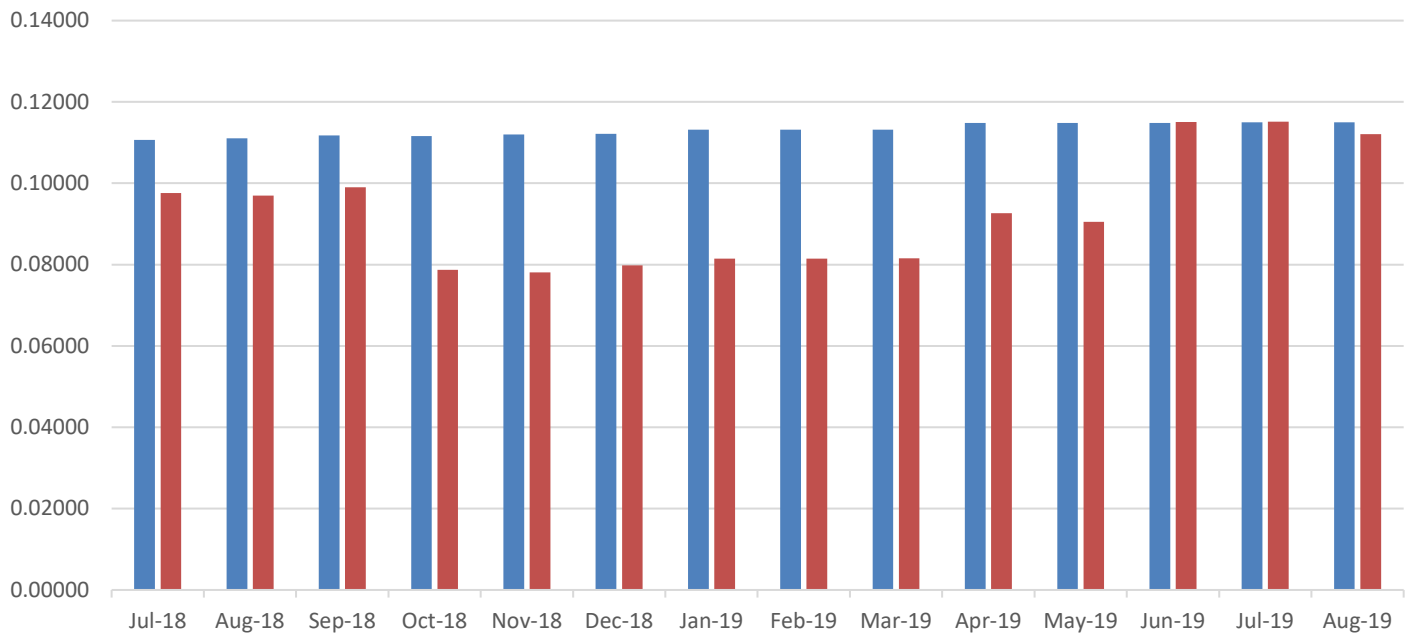
** This is a 12-month term commitment rate – other rates also available

Total Natural Gas Rate in Therms



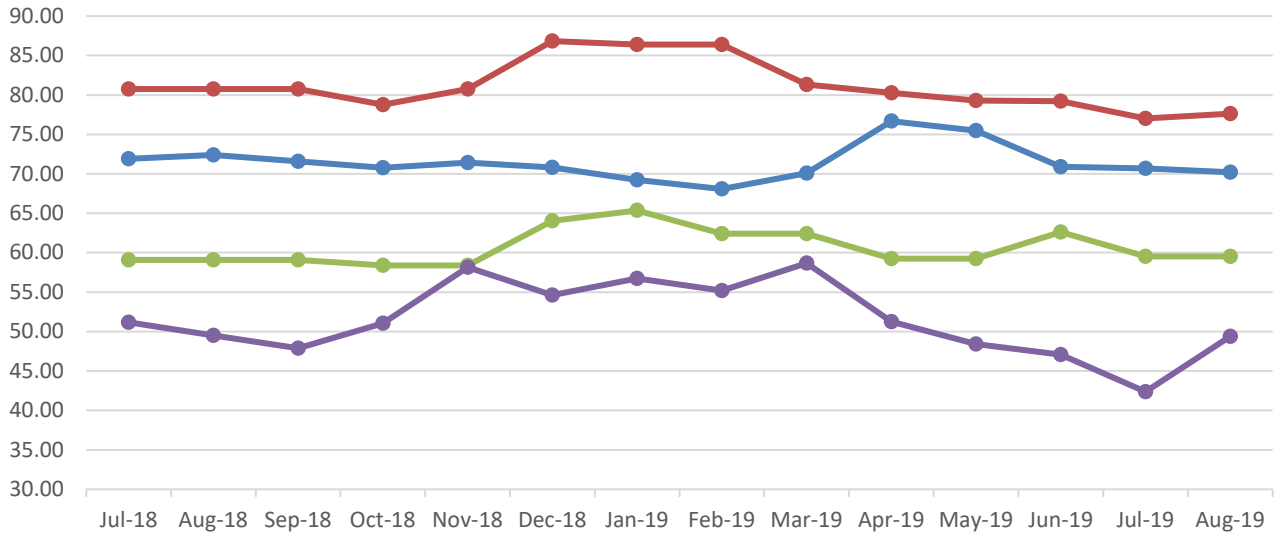
	Jul-18	Aug-18	Sep-18	Oct-18	Nov-18	Dec-18	Jan-19	Feb-19	Mar-19	Apr-19	May-19	Jun-19	Jul-19	Aug-19
NWE	0.65411	0.65907	0.65066	0.64274	0.64927	0.64314	0.62725	0.61574	0.63590	0.70176	0.68976	0.64400	0.64174	0.63717
BSG/NWE	0.74270	0.74270	0.74270	0.72250	0.74240	0.80330	0.79891	0.79891	0.74811	0.73771	0.72791	0.72696	0.70524	0.71124
MDU	0.47855	0.47855	0.47855	0.47165	0.47165	0.52815	0.52815	0.49875	0.49875	0.46695	0.46695	0.50075	0.46995	0.46995
Energy West	0.43906	0.42285	0.40655	0.43815	0.50923	0.47384	0.49486	0.47947	0.51421	0.44017	0.41153	0.39836	0.35125	0.42142

Total Electric Rate in kWh



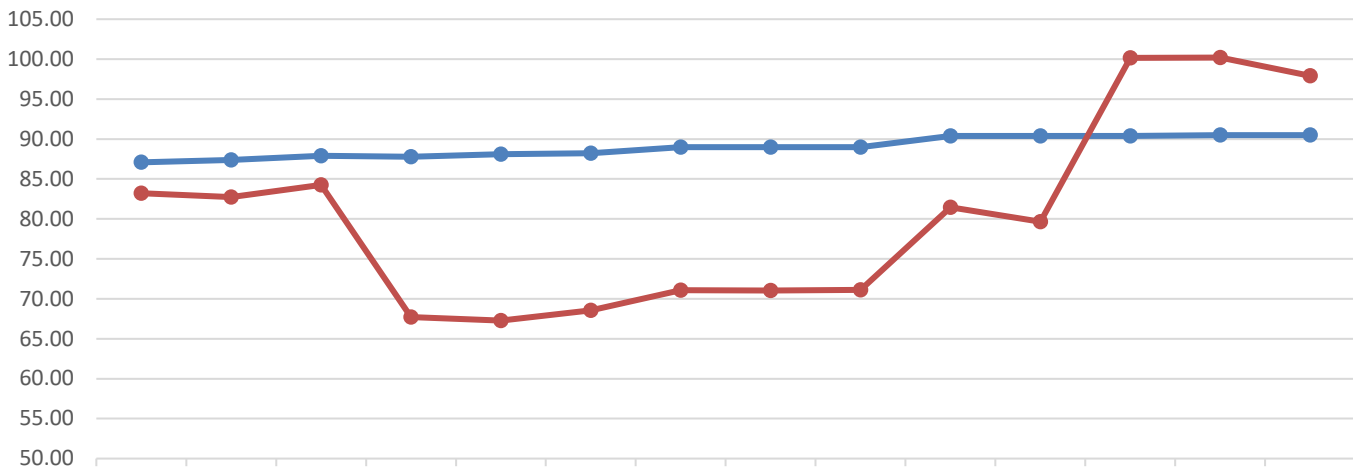
	Jul-18	Aug-18	Sep-18	Oct-18	Nov-18	Dec-18	Jan-19	Feb-19	Mar-19	Apr-19	May-19	Jun-19	Jul-19	Aug-19
NWE	0.11064	0.11105	0.11175	0.11159	0.11203	0.11216	0.11319	0.11319	0.11319	0.11485	0.11485	0.11485	0.11498	0.11498
MDU	0.09763	0.09697	0.09901	0.07869	0.07812	0.07982	0.08149	0.08144	0.08154	0.09267	0.09050	0.11508	0.11514	0.11209

Average Bill - Natural Gas Assume 30 days/100 therms



	Jul-18	Aug-18	Sep-18	Oct-18	Nov-18	Dec-18	Jan-19	Feb-19	Mar-19	Apr-19	May-19	Jun-19	Jul-19	Aug-19
NWE	71.91	72.41	71.57	70.77	71.43	70.81	69.23	68.07	70.09	76.68	75.48	70.90	70.67	70.22
BSG/NWE	80.77	80.77	80.77	78.75	80.74	86.83	86.39	86.39	81.31	80.27	79.29	79.20	77.02	77.62
MDU	59.08	59.08	59.08	58.39	58.39	64.04	65.36	62.42	62.42	59.24	59.24	62.62	59.54	59.54
Energy West	51.16	49.53	47.91	51.06	58.17	54.63	56.74	55.20	58.67	51.27	48.40	47.09	42.37	49.39

Average Bill - Electric Assume 30 days/750 kwh



	Jul-18	Aug-18	Sep-18	Oct-18	Nov-18	Dec-18	Jan-19	Feb-19	Mar-19	Apr-19	May-19	Jun-19	Jul-19	Aug-19
NWE	87.08	87.39	87.91	87.79	88.12	88.22	88.99	88.99	88.99	90.39	90.39	90.39	90.49	90.49
MDU	83.23	82.73	84.26	67.70	67.27	68.55	71.07	71.03	71.11	81.45	79.65	100.15	100.20	97.91

NOTES AND DISCLAIMERS:

This document reflects rates shown on tariffs filed and processed for each utility as of the first day of the month. If a company does not have tariffs on file with this office the rates are verified with an employee of that company. Mid-month changes are not reflected here.

Gas supply rates for each company may include transportation and storage costs from other parties. The supply rates as shown on this document do not include any deferred supply rates.

Montana Dakota Utilities (MDU) electric power supply costs consist of fuel used in its generating stations, energy purchases from MISO and a seasonal capacity contract.

MDU electric bills are assessed a tax tracking adjustment of 10.7346% on the basic service charge, energy charge, and demand charge components of the total bill.

NorthWestern Energy (NWE) electric supply rate includes the cap-ex rate base value of its owned generation.

NWE electric supply rate includes Federal production tax credits for wind resources.

MDU gas bills are assessed a tax tracking adjustment of 26.1244% on the basic service charge and distribution delivery charge components of the total bill.

NWE gas cost includes the Battle Creek, Bear Paw, and Devon revenue requirements (update 11/2013).

Big Sky Gas (BSG) offers residential supply rates based on term commitments ranging from 12 to 36 months. Those term commitments include a cancellation fee if service is discontinued before the end of the term. This document uses their 12-month rate. Customers previously enrolled in a variable rate plan continue to be served on a variable rate until such time as they switch to a term rate. New customers are required to select a term commitment rate.

SOURCES:

NWE: <http://www.northwesternenergy.com/account-services/whats-included-in-your-total-bill/tariffs-and-rates/montana-tariffs-and-rates>

BSG: <http://www.bigskygas.com> and Big Sky Gas employee verification

MDU: <https://www.montana-dakota.com/rates-and-services/rates-tariffs>

Energy West: <http://www.ewst.com>