

**MONTANA-DAKOTA UTILITIES CO.  
ANNUAL ELECTRIC RELIABILITY REPORT-MONTANA  
CALENDAR YEAR 2009  
MONTANA RULE 38.5.8619**

Reliability Index with Identified Storm Event(s)	Montana			Glendive District			Wolf Point District		
	2009 3/	2008 1/	2007 2/	2009 3/	2008 1/	2007 2/	2009	2008 1/	2007 2/
SAIFI (System Average Interruption Frequency Index)	1.83	1.74	0.30	1.95	1.66	0.37	1.50	1.96	0.10
SAIDI (System Average Interruption Duration Index)	155.25	176.57	42.10	161.17	185.72	43.00	138.22	151.47	39.70
CAIDI (Customer Average Interruption Duration Index)	84.74	101.31	140.40	82.70	111.62	115.30	92.41	77.29	384.50

Reliability Index-Without Identified Storm Event(s)	Montana			Glendive District			Wolf Point District		
	2009	2008 1/	2007	2009	2008 1/	2007	2009	2008 1/	2007 2/
SAIFI (System Average Interruption Frequency Index)	1.63	1.74	0.30	1.68	1.66	0.37	1.50	1.96	0.10
SAIDI (System Average Interruption Duration Index)	132.70	176.57	35.60	130.78	185.72	42.20	138.22	151.47	17.80
CAIDI (Customer Average Interruption Duration Index)	81.43	101.31	120.10	78.03	111.62	113.90	92.41	77.29	184.80

**Notes:**

\* SAIDI and CAIDI reported in minutes

\* SAIFI, SAIDI and CAIDI Indices starting with calendar year 2008 include outages on the distribution and transmission systems, prior to 2008 indices included only distribution system outages.

1/ Revised from indices reported in 2008 as noted in report.

2/ The following storm outages while not classified as a major storm event by definition did affect reliability indices in calendar year 2007.

\* Glendive District 5/6/07 8:00 p.m. to 5/7/07 1:00 p.m.

\* Glendive District 8/10/07 6:00 a.m. to 9:00 a.m.

\* Wolf Point District 6/17/07 11:00 a.m. to 6/18/07 10:30 a.m.

\* Wolf Point District 7/3/07 8:00 a.m. to 7/5/07 2:00 p.m.

3/ In calendar year 2009 all storm events (including major storms) were reported and included in indice calculations.

\* Glendive District -Plevna 6/15/09 6:00 p.m. to midnight

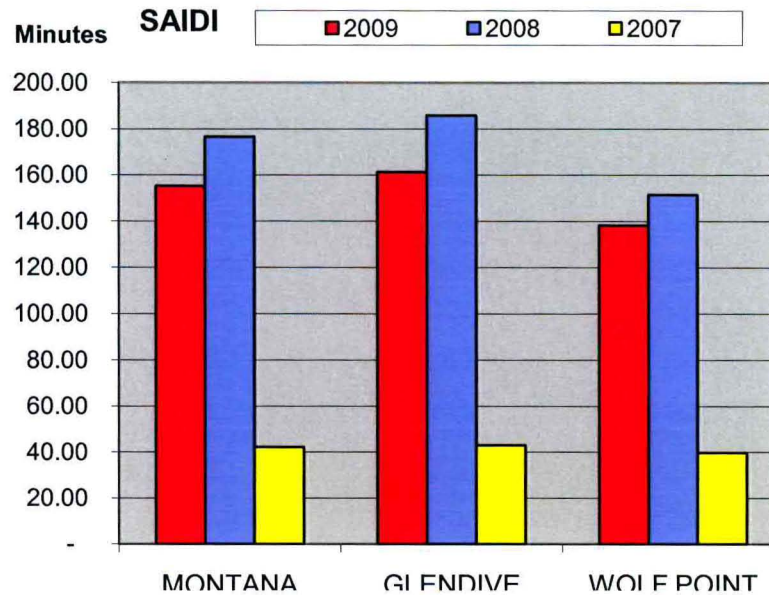
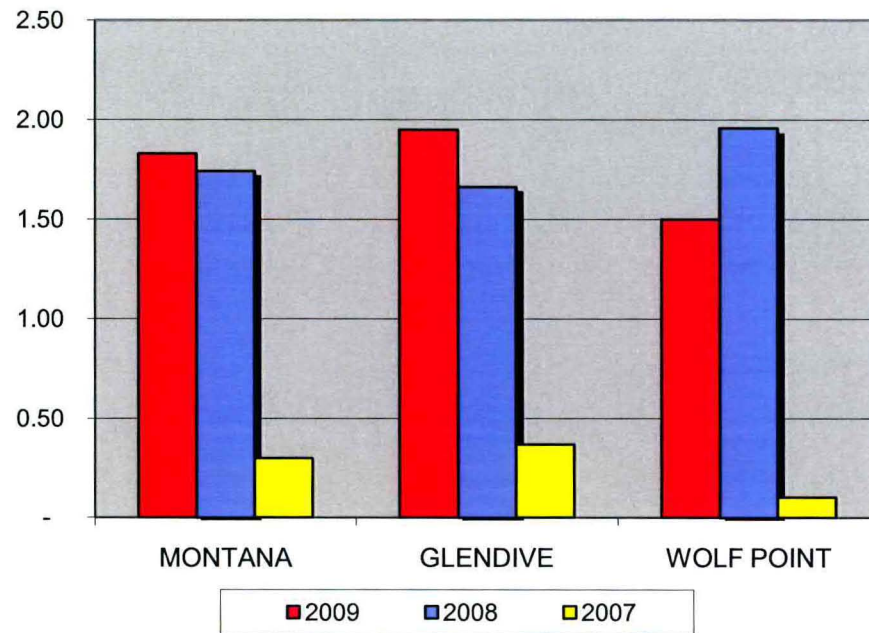
\* Glendive District-Savage 6/17/09 midnight to 1:00 a.m.

\* Glendive District 7/1/09 -Sidney-Fairview one hour outage- 10:45 p.m. to 11:45 p.m.

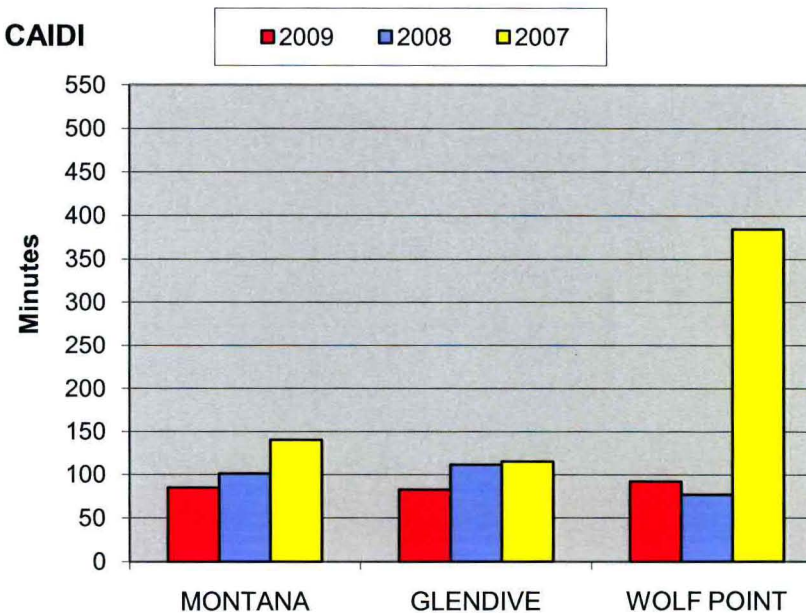
\* Glendive District 7/20/09 town of Terry without power from 4 to 6 a.m.

**MONTANA-DAKOTA UTILITIES CO.  
RELIABILITY INDEX WITH IDENTIFIED STORM EVENT(S)  
ELECTRIC UTILITY-MONTANA  
2007-2009**

**SAIFI**



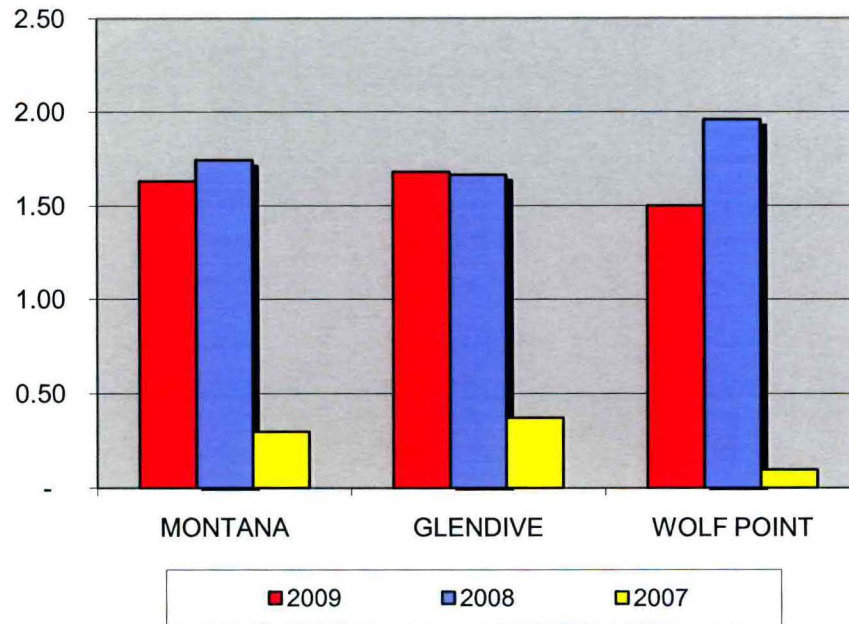
**CAIDI**



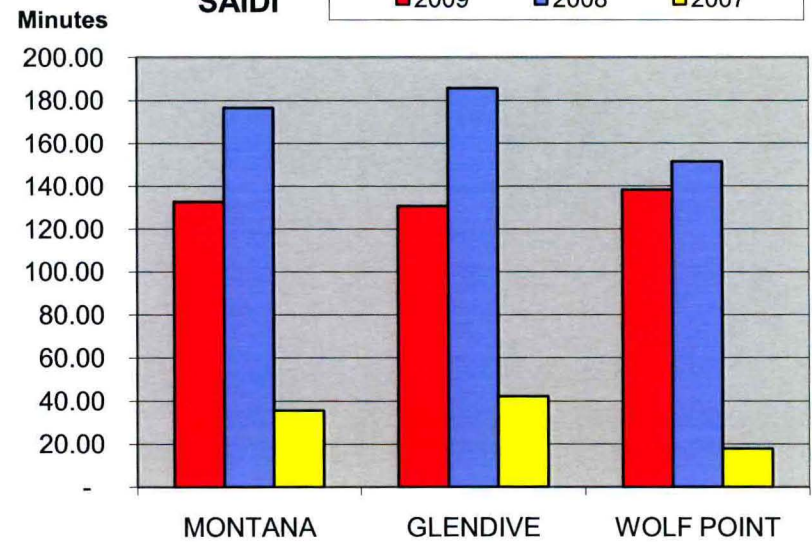
Calendar year 2007 includes only distribution system outage information.

**MONTANA-DAKOTA UTILITIES CO.  
RELIABILITY INDEX WITHOUT IDENTIFIED STORM EVENT(S)  
ELECTRIC UTILITY-MONTANA  
2007-2009**

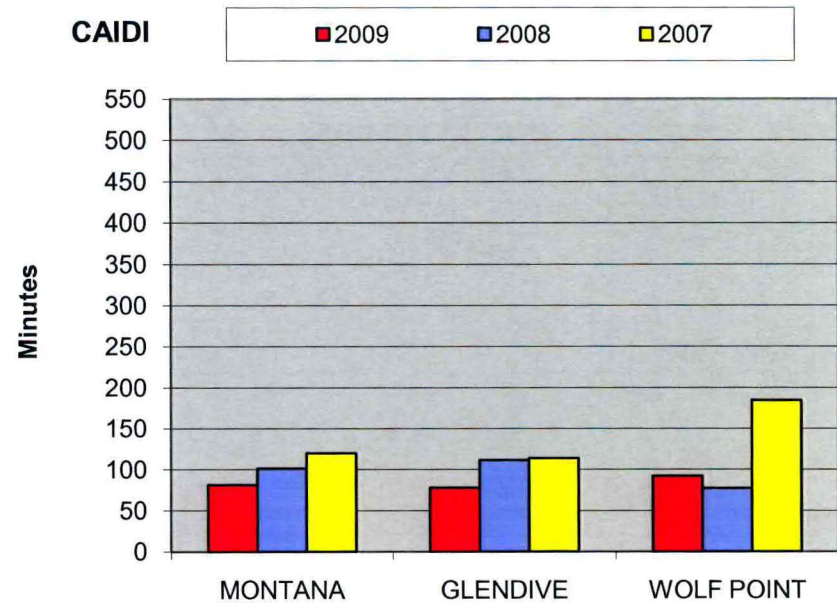
**SAIFI**



**SAIDI**



**CAIDI**



Calendar year 2007 includes only distribution system outage information.