

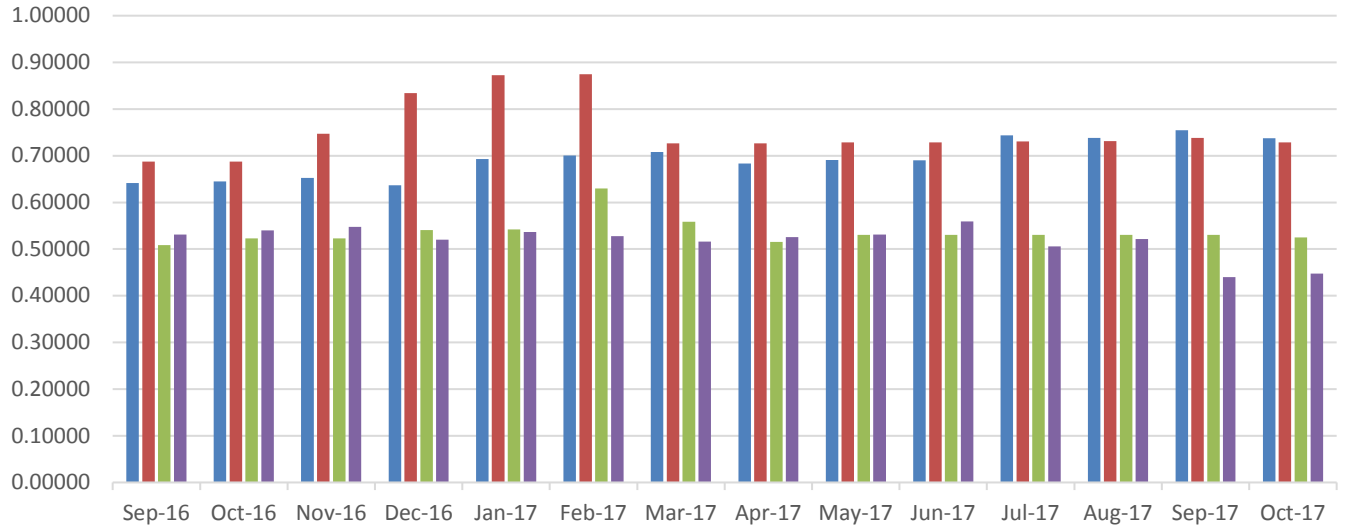
2017 Residential Rate Summary

(as of the 1st day of each month)

	NWE Gas (therm)	Big Sky Gas (therm)	MDU Gas (dkt)	EWM Gas (ccf)	NWE Electric (kwh)	MDU Electric (kwh)
January						
Total Rate	\$.6926926	\$.87220	\$5.4235	\$.47833	\$.115543	\$.072636
Supply Rate	\$.26519	\$.447	\$4.211	\$.21993	\$.067467	\$.02416
Service Chg	\$5.80/month	NWE	\$.23/day	\$7.25/month	\$4.10/month	\$.17/day
February						
Total Rate	\$.7005726	\$.8745026	\$6.3005	\$.47026	\$.112185	\$.072956
Supply Rate	\$.27307	\$.447	\$5.088	\$.21313	\$.067011	\$.02448
Service Chg	\$5.80/month	NWE	\$.23/day	\$7.25/month	\$4.10/month	\$.17/day
March						
Total Rate	\$.7077826	\$.7265	\$5.5885	\$.45969	\$.111978	\$.073026
Supply Rate	\$.28028	\$.299 **	\$4.376	\$.19643	\$.066804	\$.02455
Service Chg	\$5.80/month	NWE	\$.23/day	\$7.25/month	\$4.10/month	\$.17/day
April						
Total Rate	\$.6831126	\$.7265	\$5.1525	\$.46872	\$.113178	\$.076526
Supply Rate	\$.25561	\$.299 **	\$3.94	\$.21298	\$.068004	\$.0232
Service Chg	\$5.80/month	NWE	\$.23/day	\$7.25/month	\$4.10/month	\$.17/day
May						
Total Rate	\$.6910964	\$.72866	\$5.3055	\$.47322	\$.112738	\$.075436
Supply Rate	\$.26144	\$.299 **	\$4.093	\$.21302	\$.067564	\$.02211
Service Chg	\$5.80/month	NWE	\$.23/day	\$7.25/month	\$4.10/month	\$.17/day
June						
Total Rate	\$.6904164	\$.7286564	\$5.3055	\$.49832	\$.111965	\$.096266
Supply Rate	\$.26076	\$.299 **	\$4.093	\$.24065	\$.066791	\$.02149
Service Chg	\$5.80/month	NWE	\$.23/day	\$7.25/month	\$4.10/month	\$.17/day
July						
Total Rate	\$.7437593	\$.7305293	\$5.3065	\$.45096	\$.111932	\$.097236
Supply Rate	\$.31223	\$.299 **	\$4.093	\$.19326	\$.065871	\$.02246
Service Chg	\$5.80/month	NWE	\$.23/day	\$7.25/month	\$4.10/month	\$.17/day
August						
Total Rate	\$.7384393	\$.7315293	\$5.3065	\$.46464	\$.111954	\$.097876
Supply Rate	\$.30691	\$.30 **	\$4.093	\$.20599	\$.065893	\$.0231
Service Chg	\$5.80/month	NWE	\$.23/day	\$7.25/month	\$4.10/month	\$.17/day
September						
Total Rate	\$.7548921	\$.7384841	\$5.3065	\$.3919	\$.112108	\$.100586
Supply Rate	\$.316408	\$.30 **	\$4.093	\$.13306	\$.066047	\$.02581
Service Chg	\$5.65/month	NWE	\$.23/day	\$7.25/month	\$4.10/month	\$.17/day
October						
Total Rate	\$.7374321	\$.7284841	\$5.2515	\$.39881	\$.112546	\$.078836
Supply Rate	\$.298948	\$.29 **	\$4.038	\$.13991	\$.066485	\$.02551
Service Chg	\$5.65/month	NWE	\$.23/day	\$7.25/month	\$4.10/month	\$.17/day
November						
Total Rate	\$	\$	\$	\$	\$	\$
Supply Rate	\$	\$	\$	\$	\$	\$
Service Chg	\$	NWE	\$	\$	\$	\$
December						
Total Rate	\$	\$	\$	\$	\$	\$
Supply Rate	\$	\$	\$	\$	\$	\$
Service Chg	\$	NWE	\$	\$	\$	\$

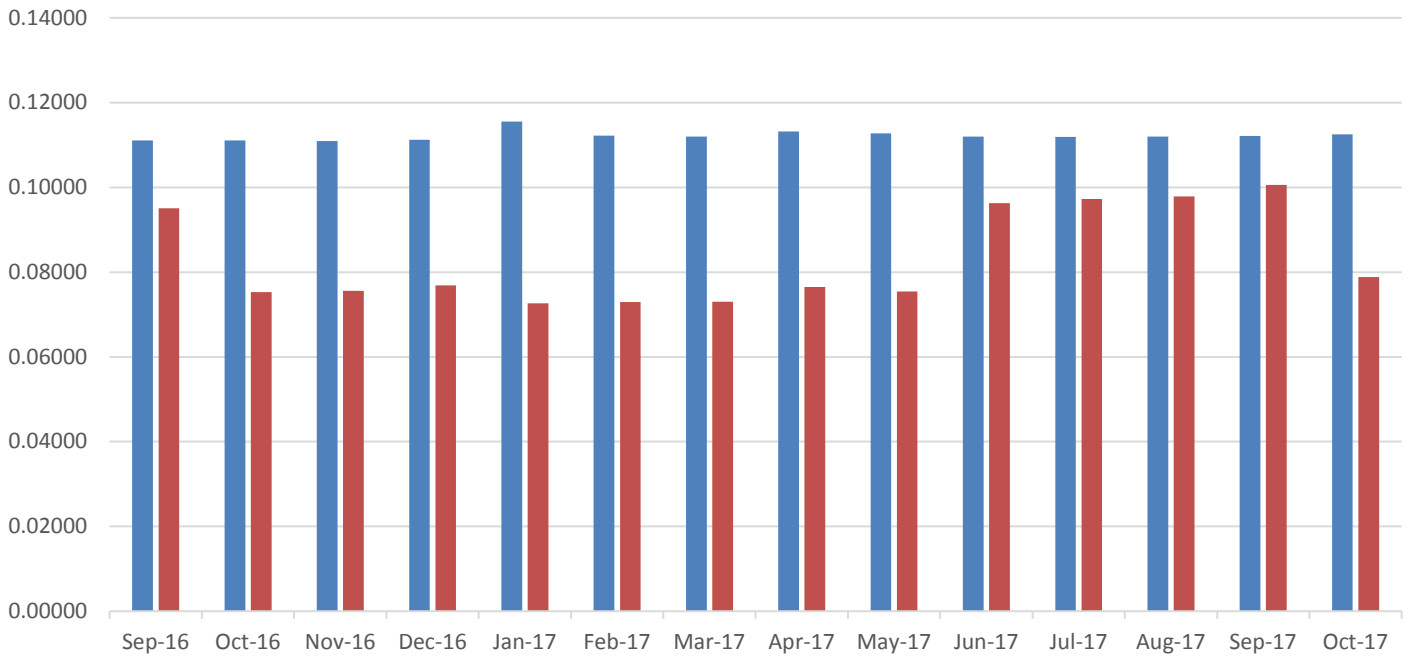
** Variable rate no longer offered to new customers; this is a 12-month term commitment rate

Total Natural Gas Rate in Therms



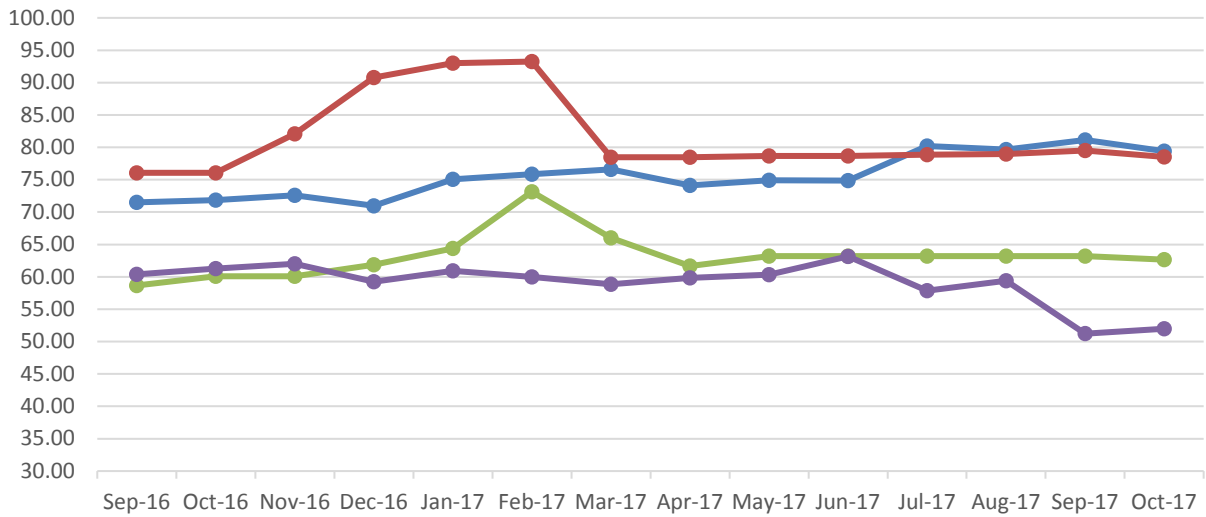
	Sep-16	Oct-16	Nov-16	Dec-16	Jan-17	Feb-17	Mar-17	Apr-17	May-17	Jun-17	Jul-17	Aug-17	Sep-17	Oct-17
NWE	0.64165	0.64507	0.65230	0.63635	0.69269	0.70057	0.70778	0.68311	0.69110	0.69042	0.74376	0.73844	0.75489	0.73743
Big Sky Gas	0.68724	0.68724	0.74724	0.83424	0.87220	0.87450	0.72650	0.72650	0.72866	0.72866	0.73053	0.73153	0.73848	0.72848
MDU	0.50865	0.52265	0.52265	0.54045	0.54235	0.63005	0.55885	0.51525	0.53055	0.53055	0.53065	0.53065	0.53065	0.52515
Energy West	0.53126	0.54017	0.54756	0.52019	0.53668	0.52763	0.51577	0.52590	0.53095	0.55911	0.50597	0.52132	0.43971	0.44746

Total Electric Rate in kWh



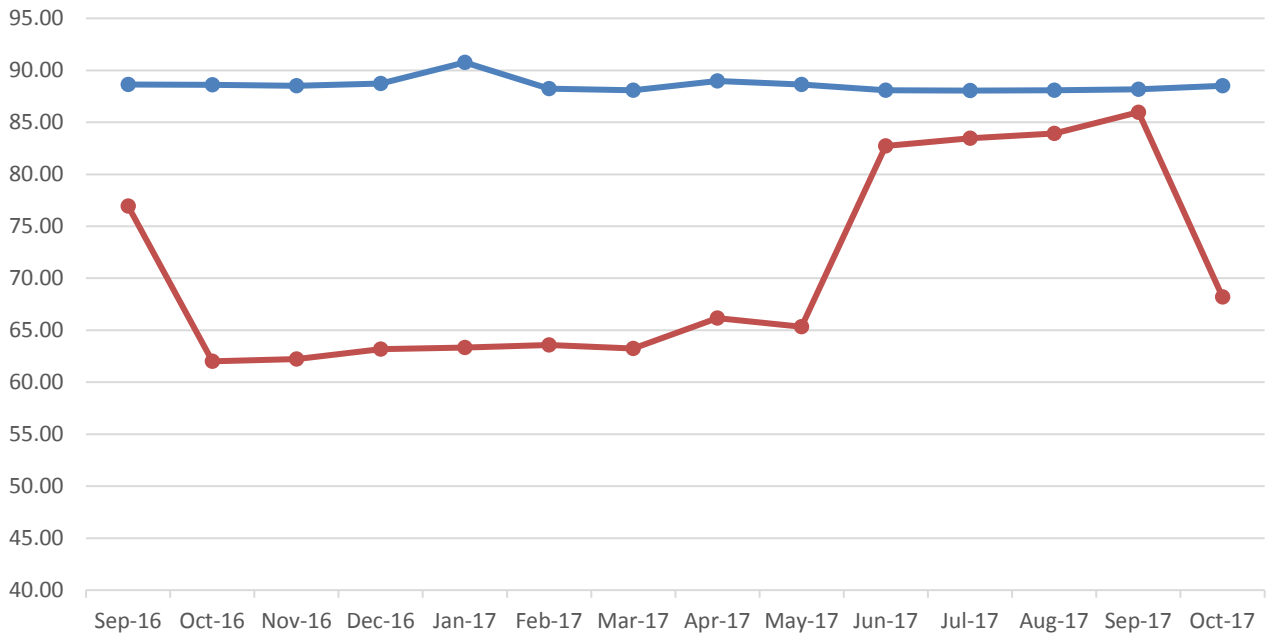
	Sep-16	Oct-16	Nov-16	Dec-16	Jan-17	Feb-17	Mar-17	Apr-17	May-17	Jun-17	Jul-17	Aug-17	Sep-17	Oct-17
NWE	0.11109	0.11106	0.11096	0.11124	0.11554	0.11219	0.11198	0.11318	0.11274	0.11197	0.11193	0.11195	0.11211	0.11255
MDU	0.09512	0.07529	0.07557	0.07686	0.07264	0.07296	0.07303	0.07653	0.07544	0.09627	0.09724	0.09788	0.10059	0.07884

Average Bill - Natural Gas Assume 30 days/100 therms



	Sep-16	Oct-16	Nov-16	Dec-16	Jan-17	Feb-17	Mar-17	Apr-17	May-17	Jun-17	Jul-17	Aug-17	Sep-17	Oct-17
NWE	71.51	71.86	72.58	70.98	75.07	75.86	76.58	74.11	74.91	74.84	80.18	79.64	81.14	79.39
Big Sky Gas	76.07	76.07	82.07	90.77	93.02	93.25	78.45	78.45	78.67	78.67	78.85	78.95	79.50	78.50
MDU	58.67	60.07	60.07	61.85	64.37	73.14	66.02	61.66	63.19	63.19	63.20	63.20	63.20	62.65
Energy West	60.38	61.27	62.01	59.27	60.92	60.01	58.83	59.84	60.34	63.16	57.85	59.38	51.22	52.00

Average Bill - Electric Assume 30 days/750 kwh



	Sep-16	Oct-16	Nov-16	Dec-16	Jan-17	Feb-17	Mar-17	Apr-17	May-17	Jun-17	Jul-17	Aug-17	Sep-17	Oct-17
NWE	88.62	88.60	88.52	88.73	90.76	88.24	88.08	88.98	88.65	88.07	88.05	88.07	88.18	88.51
MDU	76.95	62.01	62.22	63.19	63.33	63.57	63.24	66.16	65.34	82.73	83.46	83.94	85.97	68.20

NOTES AND DISCLAIMERS:

This document shows the verified rates for each utility as of the first day of the month. Mid-month changes are not reflected here.

Gas supply rates for each company may include transportation and storage costs from other parties. The supply rates as shown on this document do not include any deferred supply rates.

MDU's electric power supply costs consist of fuel used in its generating stations, energy purchases from MISO and a seasonal capacity contract.

MDU electric bills are assessed a .331% surcharge on the basic service charge, energy, and demand components of the total bill to recover an undercollection in the PSC and MCC funding fees (for a 3-year period from April 2016).

MDU electric bills are assessed a tax tracking adjustment of 8.7202% on the basic service charge, energy charge, and demand charge components of the total bill.

NWE's electric supply rate includes the cap-ex rate base value of its owned generation.

NWE's electric supply rate includes Federal production tax credits for wind resources.

MDU's gas bills are assessed a tax tracker adjustment of 17.7244% on the basic service charge and distribution delivery charge components of the total bill.

NWE's gas cost includes the Battle Creek, Bear Paw, and Devon revenue requirements (update 11/2013).

Big Sky Gas offers residential rates based on term commitments ranging from 12 to 36 months. Those term commitments include a cancellation fee if service is discontinued before the end of the term. This document uses their 12-month rate. Customers previously enrolled in a variable rate plan continue to be served on a variable rate until such time as they switch to a term rate. New customers are required to select a term commitment rate.

SOURCES:

NWE: <http://www.northwesternenergy.com/account-services/whats-included-in-your-total-bill/tariffs-and-rates/montana-tariffs-and-rates>

Big Sky Gas: <http://www.bigskygas.com>

MDU: <https://www.montana-dakota.com/rates-and-services/rates-tariffs>

Energy West: <http://www.ewst.com/index.php?id=53>