

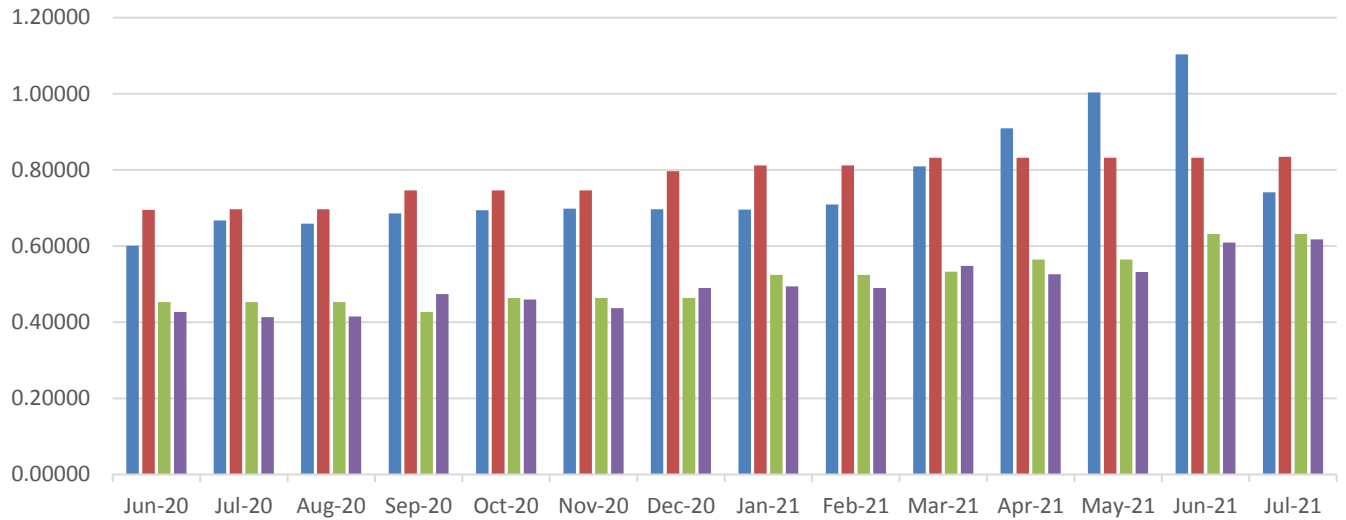
2021 Residential Rate Summary

(as of the 1st day of each month)

	NWE Gas (therm)	Big Sky Gas (therm)	MDU Gas (dkt)	EWM Gas (ccf)	NWE Electric (kwh)	MDU Electric (kwh)
January						
Total Rate	\$.6955787	\$.8118577	\$5.2445	\$.44044	\$.115792	\$.087286
Supply Rate	\$.282721	\$.399 **	\$4.131	\$.22653	\$.066412	\$.02052
Service Chg	\$6.50/month	NWE	\$.26/day	\$6.50/month	\$4.00/month	\$.19/day
February						
Total Rate	\$.7095387	\$.8118577	\$5.2445	\$.43678	\$.115792	\$.0878260
Supply Rate	\$.296681	\$.399 **	\$4.131	\$.22465	\$.066412	\$.02106
Service Chg	\$6.50/month	NWE	\$.26/day	\$6.50/month	\$4.00/month	\$.19/day
March						
Total Rate	\$.8095387	\$.83186	\$5.3275	\$.48819	\$.116526	\$.089396
Supply Rate	\$.396681	\$.419 **	\$4.214	\$.23854	\$.066038	\$.02263
Service Chg	\$6.50/month	NWE	\$.26/day	\$6.50/month	\$4.20/month	\$.19/day
April						
Total Rate	\$.9095387	\$.83186	\$5.6455	\$.4688	\$.113991	\$.093326
Supply Rate	\$.496681	\$.419 **	\$4.214	\$.21936	\$.065346	\$.02656
Service Chg	\$6.50/month	NWE	\$.30/day	\$6.50/month	\$4.20/month	\$.19/day
May						
Total Rate	\$1.0037006	\$.8321196	\$5.6455	\$.47373	\$.113991	\$.088056
Supply Rate	\$.590581	\$.419 **	\$4.214	\$.23764	\$.065346	\$.02129
Service Chg	\$6.50/month	NWE	\$.30/day	\$6.73/month	\$4.20/month	\$.19/day
June						
Total Rate	\$1.1037006	\$.8321196	\$6.3195	\$.54313	\$.113991	\$.106886
Supply Rate	\$.690581	\$.419 **	\$4.888	\$.28544	\$.065346	\$.02015
Service Chg	\$6.50/month	NWE	\$.30/day	\$6.73/month	\$4.20/month	\$.19/day
July						
Total Rate	\$.7413787	\$.8342477	\$6.3195	\$.55059	\$.117011	\$.109146
Supply Rate	\$.326131	\$.419 **	\$4.888	\$.29283	\$.068378	\$.02241
Service Chg	\$6.50/month	NWE	\$.30/day	\$6.73/month	\$4.20/month	\$.19/day
August						
Total Rate	\$	\$	\$	\$	\$	\$
Supply Rate	\$	\$ **	\$	\$	\$	\$
Service Chg	\$/month	NWE	\$/day	\$/month	\$/month	\$/day
September						
Total Rate	\$	\$	\$	\$	\$	\$
Supply Rate	\$	\$ **	\$	\$	\$	\$
Service Chg	\$/month	NWE	\$/day	\$/month	\$/month	\$/day
October						
Total Rate	\$	\$	\$	\$	\$	\$
Supply Rate	\$	\$ **	\$	\$	\$	\$
Service Chg	\$/month	NWE	\$/day	\$/month	\$/month	\$/day
November						
Total Rate	\$	\$	\$	\$	\$	\$
Supply Rate	\$	\$ **	\$	\$	\$	\$
Service Chg	\$/month	NWE	\$/day	\$/month	\$/month	\$/day
December						
Total Rate	\$	\$	\$	\$	\$	\$
Supply Rate	\$	\$ **	\$	\$	\$	\$
Service Chg	\$/month	NWE	\$/day	\$/month	\$/month	\$/day

** This is a 12-month term commitment rate – other rates also available

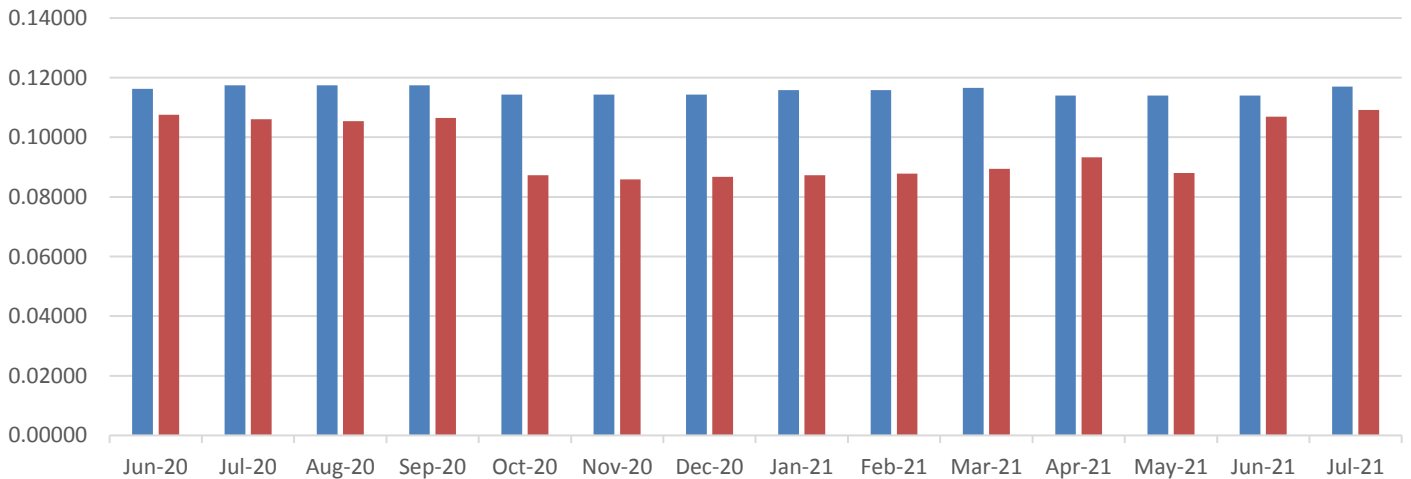
Total Natural Gas Rate in Therms



	Jun-20	Jul-20	Aug-20	Sep-20	Oct-20	Nov-20	Dec-20	Jan-21	Feb-21	Mar-21	Apr-21	May-21	Jun-21	Jul-21
NWE	0.60070	0.66713	0.65860	0.68599	0.69442	0.69803	0.69683	0.69558	0.70954	0.80954	0.90954	1.00370	1.10370	0.74138
BSG/NWE	0.69479	0.69635	0.69635	0.74635	0.74635	0.74635	0.79635	0.81186	0.81186	0.83186	0.83186	0.83212	0.83212	0.83425
MDU	0.45285	0.45285	0.45285	0.42655	0.46395	0.46395	0.46395	0.52445	0.52445	0.53275	0.56455	0.56455	0.63195	0.63195
Energy West	0.42691	0.41315	0.41534	0.47368	0.46003	0.43685	0.49010	0.49417	0.49006	0.54774	0.52599	0.53152	0.60939	0.61776

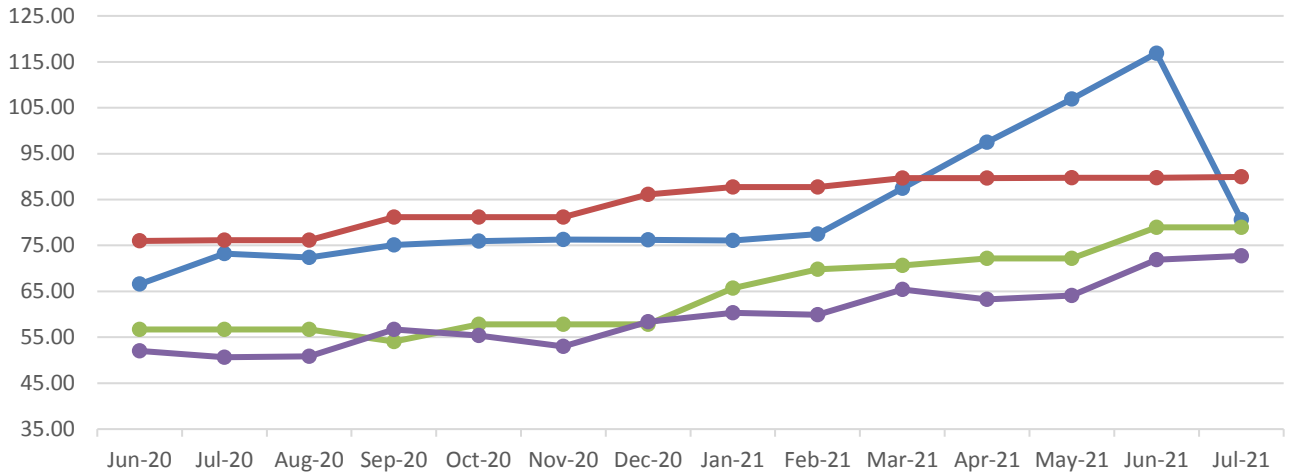
NOTE: MDU natural gas interim rate increase of 22.658%, applicable to basic service charge and distribution rate, resulted in increase of \$4.11 on average bill (Feb, March)

Total Electric Rate in kWh



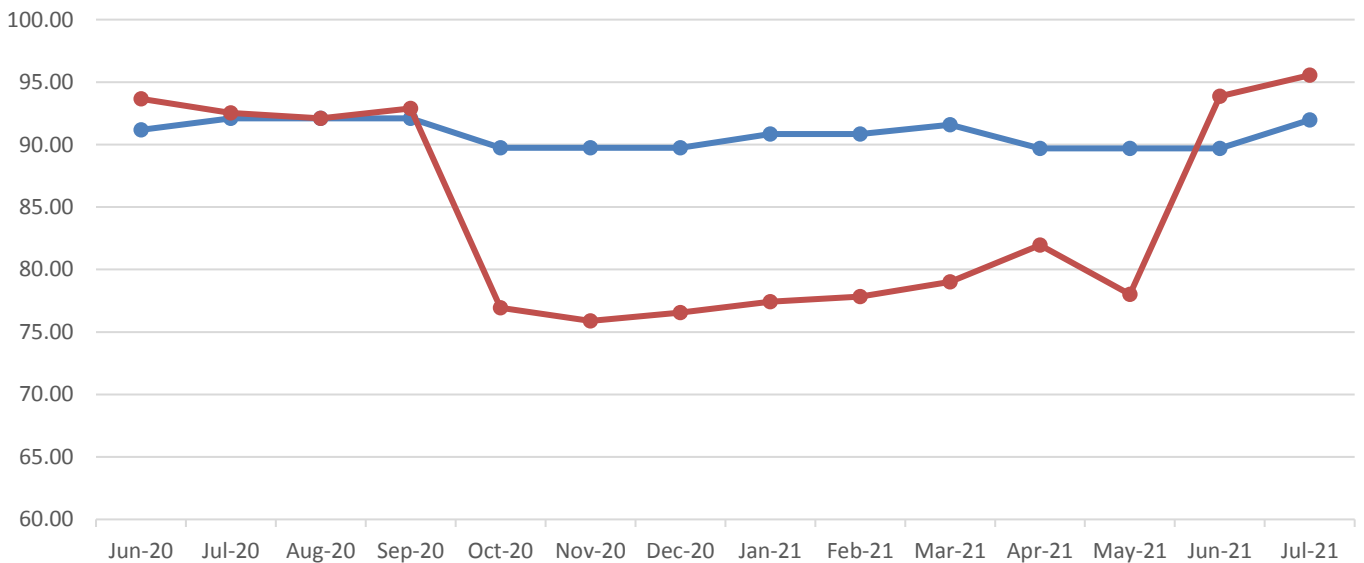
	Jun-20	Jul-20	Aug-20	Sep-20	Oct-20	Nov-20	Dec-20	Jan-21	Feb-21	Mar-21	Apr-21	May-21	Jun-21	Jul-21
NWE	0.11622	0.11746	0.11746	0.11746	0.11431	0.11431	0.11431	0.11579	0.11579	0.11653	0.11399	0.11399	0.11399	0.11701
MDU	0.10753	0.10604	0.10546	0.10645	0.08730	0.08589	0.08677	0.08729	0.08783	0.08940	0.09333	0.08806	0.10689	0.10915

Average Bill - Natural Gas Assume 30 days/100 therms



	Jun-20	Jul-20	Aug-20	Sep-20	Oct-20	Nov-20	Dec-20	Jan-21	Feb-21	Mar-21	Apr-21	May-21	Jun-21	Jul-21
● NWE	66.57	73.21	72.36	75.10	75.94	76.30	76.18	76.06	77.45	87.45	97.45	106.87	116.87	80.64
● BSG/NWE	75.98	76.14	76.14	81.14	81.14	81.14	86.14	87.69	87.69	89.69	89.69	89.71	89.71	89.92
● MDU	56.71	56.71	56.71	54.08	57.82	57.82	57.82	65.69	69.80	70.63	72.21	72.21	78.95	78.95
● Energy West	52.03	50.66	50.88	56.71	55.34	53.03	58.35	60.31	59.90	65.44	63.27	64.10	71.89	72.73

Average Bill - Electric Assume 30 days/750 kwh



	Jun-20	Jul-20	Aug-20	Sep-20	Oct-20	Nov-20	Dec-20	Jan-21	Feb-21	Mar-21	Apr-21	May-21	Jun-21	Jul-21
● NWE	91.16	92.10	92.10	92.10	89.73	89.73	89.73	90.84	90.84	91.59	89.69	89.69	89.69	91.96
● MDU	93.65	92.54	92.10	92.88	76.94	75.88	76.54	77.43	77.84	79.02	81.96	78.01	93.85	95.55

NOTES AND DISCLAIMERS:

This document reflects rates shown on tariffs filed and processed for each utility as of the first day of the month. If a company does not have tariffs on file with this office the rates are verified with an employee of that company. Mid-month changes are not reflected on this document until the subsequent month.

Gas supply rates for each company may include transportation and storage costs from other parties.

Montana Dakota Utilities (MDU) electric power supply costs consist of fuel used in its generating stations, energy purchases from MISO and a seasonal capacity contract.

NorthWestern Energy (NWE) electric supply rate includes the annual variable costs associated with the production and procurement of energy supplies which is calculated annually through its Power Costs and Credit Adjustment Mechanism (PCCAM). In addition it includes the fixed recovery of costs approved in its last electric general rate case Docket 2018.02.012 associated with the operating costs and return on its investment in its five owned generating assets.

NWE gas supply rate includes the cost of gas and gas transportation from other suppliers, as well as the Battle Creek, Bear Paw, and Devon revenue requirements.

Tax tracking adjustments are included in the total rate for NWE gas, NWE electric, and Big Sky Gas; and are included in the average bill for MDU gas, MDU electric, and Energy West.

Big Sky Gas (BSG) offers residential supply rates based on term commitments ranging from 12 to 36 months. Those term commitments include a cancellation fee if service is discontinued before the end of the term. This document uses their 12-month rate. Customers previously enrolled in a variable rate plan continue to be served on a variable rate until such time as they switch to a term rate. New customers are required to select a term commitment rate.

SOURCES:

NWE: <http://www.northwesternenergy.com/account-services/whats-included-in-your-total-bill/tariffs-and-rates/montana-tariffs-and-rates>

BSG: <http://www.bigskygas.com> and Big Sky Gas employee verification

MDU: <https://www.montana-dakota.com/rates-and-services/rates-tariffs>

Energy West: <http://www.ewst.com>