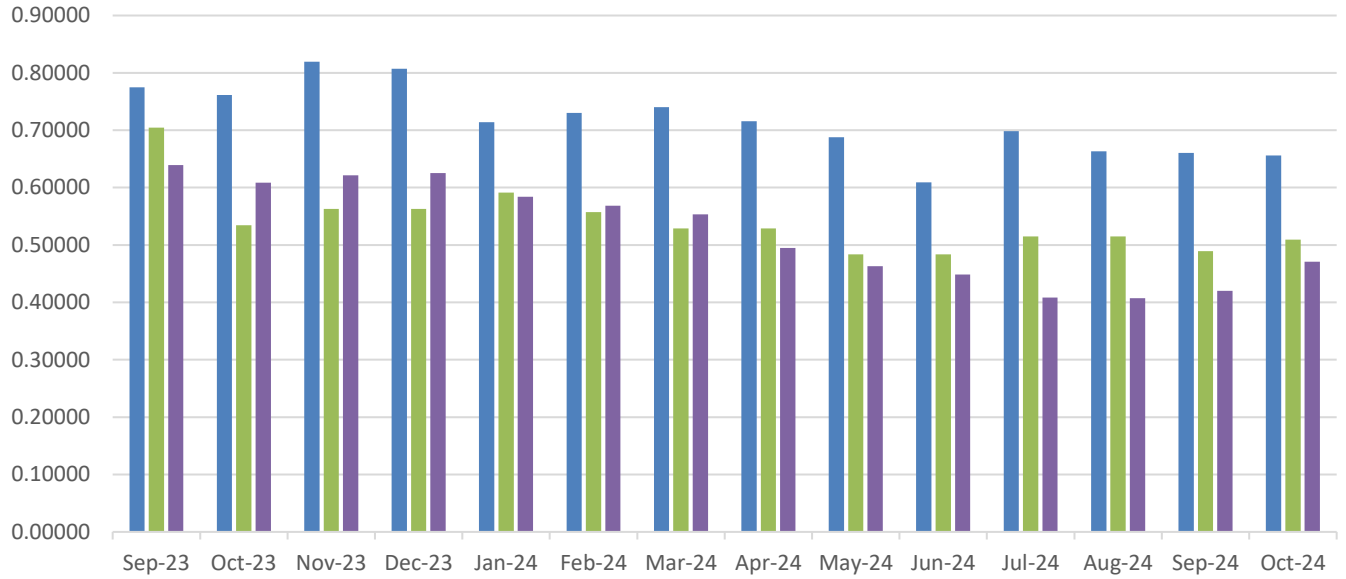


**2024 Residential Rate Summary** (as of the 1<sup>st</sup> day of each month)

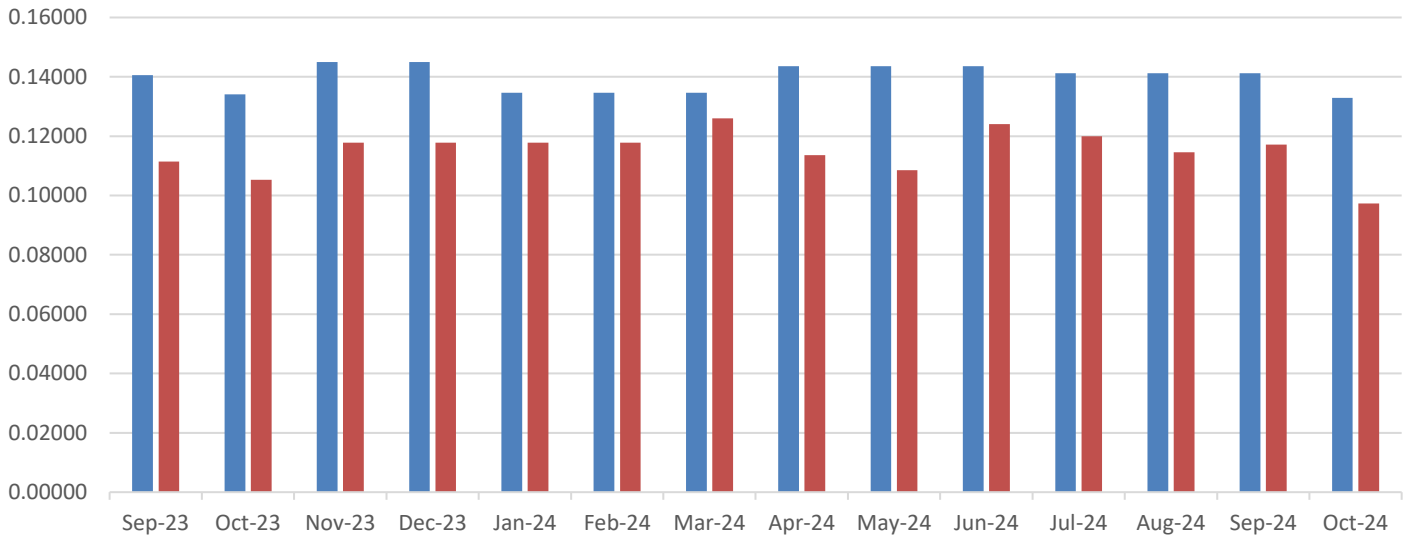
	<b>NWE Gas (therm)</b>	<b>MDU Gas (dkt)</b>	<b>EWM Gas (ccf)</b>	<b>NWE Electric (kwh)</b>	<b>MDU Electric (kwh)</b>
<b>January</b>					
Total Rate	\$ .7140319	\$5.9155	\$.52059	\$.134609	\$.117856
Supply Rate	\$.2977251	\$4.489	\$.24905	\$.078445	\$.04365
Service Chg	\$6.50/month	\$.30/day	\$6.73/month	\$4.20/month	\$.19/day
<b>February</b>					
Total Rate	\$.7299919	\$5.5735	\$.50668	\$.134609	\$.117856
Supply Rate	\$.3136851	\$4.147	\$.25872	\$.078445	\$.04365
Service Chg	\$6.50/month	\$.30/day	\$6.73/month	\$4.20/month	\$.19/day
<b>March</b>					
Total Rate	\$.7403919	\$5.2905	\$.4933	\$.134609	\$.126006
Supply Rate	\$.3240851	\$3.864	\$.23483	\$.078445	\$.0518
Service Chg	\$6.50/month	\$.30/day	\$6.73/month	\$4.20/month	\$.19/day
<b>April</b>					
Total Rate	\$.7157919	\$5.2905	\$.44093	\$.143575	\$.113626
Supply Rate	\$.2994851	\$3.864	\$.1816	\$.087411	\$.03942
Service Chg	\$6.50/month	\$.30/day	\$6.73/month	\$4.20/month	\$.19/day
<b>May</b>					
Total Rate	\$.6876634	\$4.8355	\$.41265	\$.143575	\$.108526
Supply Rate	\$.2756051	\$3.409	\$.15376	\$.087411	\$.03432
Service Chg	\$6.50/month	\$.30/day	\$6.73/month	\$4.20/month	\$.19/day
<b>June</b>					
Total Rate	\$.6093834	\$4.8355	\$.39981	\$.143575	\$.124076
Supply Rate	\$.1973251	\$3.409	\$.14083	\$.087411	\$.0299
Service Chg	\$6.50/month	\$.30/day	\$6.73/month	\$4.20/month	\$.19/day
<b>July</b>					
Total Rate	\$.6982693	\$5.1475	\$.36407	\$.141157	\$.119916
Supply Rate	\$.2857251	\$3.721	\$.10502	\$.084929	\$.02574
Service Chg	\$6.50/month	\$.30/day	\$6.73/month	\$4.20/month	\$.19/day
<b>August</b>					
Total Rate	\$.6633593	\$5.1475	\$.3629	\$.141157	\$.114526
Supply Rate	\$.2508151	\$3.721	\$.10528	\$.084929	\$.02035
Service Chg	\$6.50/month	\$.30/day	\$6.73/month	\$4.20/month	\$.19/day
<b>September</b>					
Total Rate	\$.6606293	\$4.8915	\$.3745	\$.141157	\$.117156
Supply Rate	\$.2480851	\$3.465	\$.11681	\$.084929	\$.02298
Service Chg	\$6.50/month	\$.30/day	\$6.73/month	\$4.20/month	\$.19/day
<b>October</b>					
Total Rate	\$.6562473	\$5.0925	\$.41954	\$.132918	\$.097276
Supply Rate	\$.2437031	\$3.666	\$.12902	\$.076677	\$.02307
Service Chg	\$6.50/month	\$.30/day	\$6.73/month	\$4.20/month	\$.19/day
<b>November</b>					
Total Rate	\$	\$	\$	\$	\$
Supply Rate	\$	\$	\$	\$	\$
Service Chg	\$	\$	\$	\$	\$
<b>December</b>					
Total Rate	\$	\$	\$	\$	\$
Supply Rate	\$	\$	\$	\$	\$
Service Chg	\$	\$	\$	\$	\$

### Total Natural Gas Rate in Therms



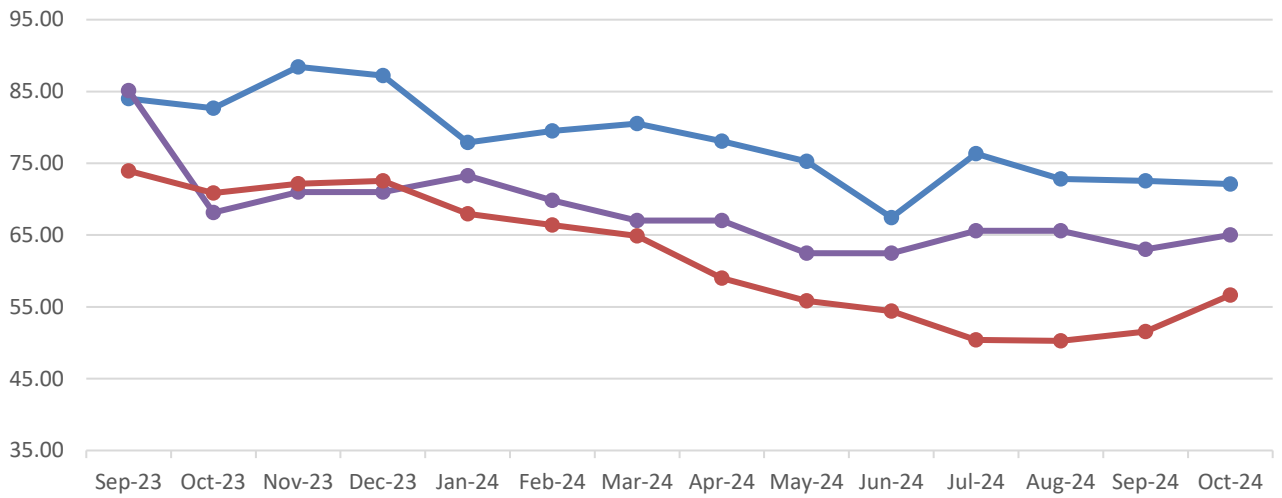
	Sep-23	Oct-23	Nov-23	Dec-23	Jan-24	Feb-24	Mar-24	Apr-24	May-24	Jun-24	Jul-24	Aug-24	Sep-24	Oct-24
NWE	0.77495	0.76161	0.81933	0.80732	0.71403	0.72999	0.74039	0.71579	0.68766	0.60938	0.69827	0.66336	0.66063	0.65625
MDU	0.70465	0.53465	0.56305	0.56305	0.59155	0.55735	0.52905	0.52905	0.48355	0.48355	0.51475	0.51475	0.48915	0.50925
Energy West	0.63923	0.60839	0.62135	0.62546	0.58410	0.56849	0.55348	0.49472	0.46299	0.44858	0.40848	0.40717	0.42018	0.47072

### Total Electric Rate in kWh



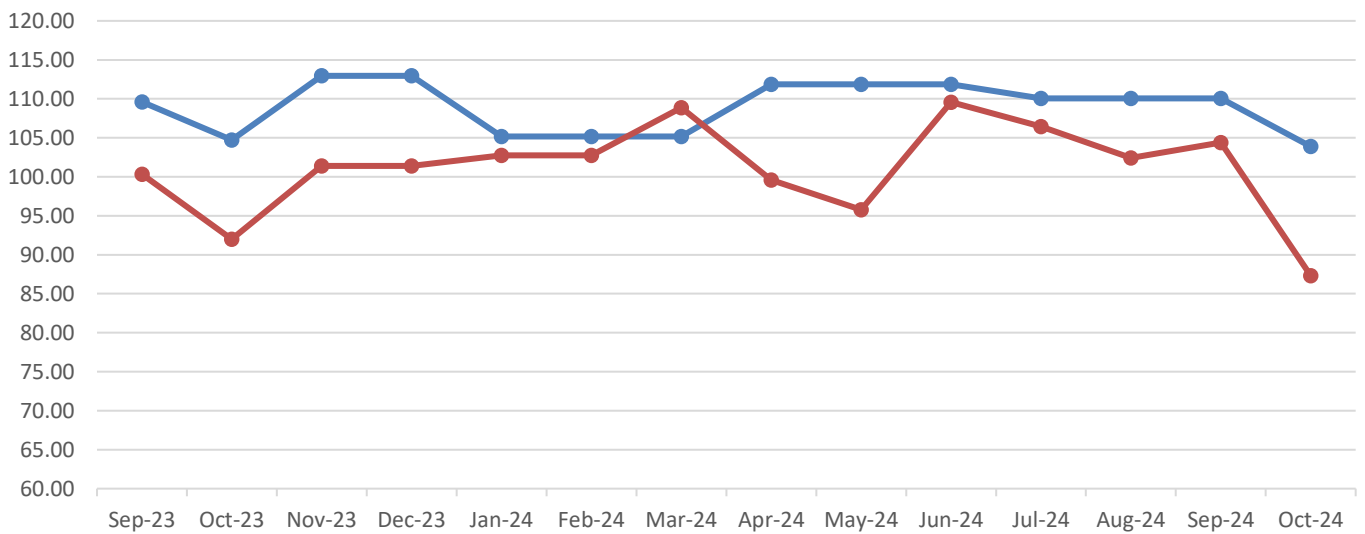
	Sep-23	Oct-23	Nov-23	Dec-23	Jan-24	Feb-24	Mar-24	Apr-24	May-24	Jun-24	Jul-24	Aug-24	Sep-24	Oct-24
NWE	0.14054	0.13404	0.14500	0.14500	0.13461	0.13461	0.13461	0.14358	0.14358	0.14358	0.14116	0.14116	0.14116	0.13292
MDU	0.11144	0.10531	0.11786	0.11786	0.11786	0.11786	0.12601	0.11363	0.10853	0.12408	0.11992	0.11453	0.11716	0.09728

### Average Bill - Natural Gas Assume 30 days/100 therms



	Sep-23	Oct-23	Nov-23	Dec-23	Jan-24	Feb-24	Mar-24	Apr-24	May-24	Jun-24	Jul-24	Aug-24	Sep-24	Oct-24
NWE	84.00	82.66	88.43	87.23	77.90	79.50	80.54	78.08	75.27	67.44	76.33	72.84	72.56	72.12
MDU	85.14	68.14	70.98	70.98	73.27	69.85	67.02	67.02	62.47	62.47	65.59	65.59	63.03	65.04
Energy West	73.94	70.86	72.15	72.57	67.96	66.40	64.90	59.02	55.85	54.41	50.40	50.27	51.57	56.62

### Average Bill - Electric Assume 30 days/750 kwh



	Sep-23	Oct-23	Nov-23	Dec-23	Jan-24	Feb-24	Mar-24	Apr-24	May-24	Jun-24	Jul-24	Aug-24	Sep-24	Oct-24
NWE	109.61	104.73	112.95	112.95	105.16	105.16	105.16	111.88	111.88	111.88	110.07	110.07	110.07	103.89
MDU	100.32	92.00	101.41	101.41	102.76	102.76	108.87	99.59	95.76	109.58	106.46	102.41	104.39	87.33

NOTE: From February 1, 2023, through September 30, 2023, MDU's average electric bill included an interim rate increase of 3.708% applied to the monthly service charge and the energy charge (Docket 2022.11.099)

## **NOTES AND DISCLAIMERS:**

This document reflects rates shown on tariffs filed and processed for each utility as of the first day of the month. Mid-month changes are not reflected on this document until the subsequent month.

Gas supply rates for each company may include transportation and storage costs from other parties.

**Montana Dakota Utilities (MDU) electric** power supply costs consist of fuel used in its generating stations, energy purchases from MISO, capacity purchases, generating station pipeline charges, and reagent costs.

**NorthWestern Energy (NWE) electric** supply rate includes the annual variable costs associated with the production and procurement of energy supplies which is calculated annually through its Power Costs and Credit Adjustment Mechanism (“PCCAM”). In addition, it includes the recovery of certain fixed costs approved in its last electric general rate case.

**NWE gas** supply rate includes the cost of gas and gas transportation from other suppliers, as well as the Battle Creek, Bear Paw, and Devon revenue requirements.

**Tax tracking adjustments** are included in the total rate for NWE gas and NWE electric; and are included in the average bill for MDU gas, MDU electric, and Energy West.

## **SOURCES:**

NWE: <https://www.northwesternenergy.com/billing-payment/rates-tariffs/rates-tariffs-montana>

MDU: <https://www.montana-dakota.com/rates-services/rates-tariffs/>

Energy West: <https://www.ewst.com/areas-we-serve/great-falls/rates/>