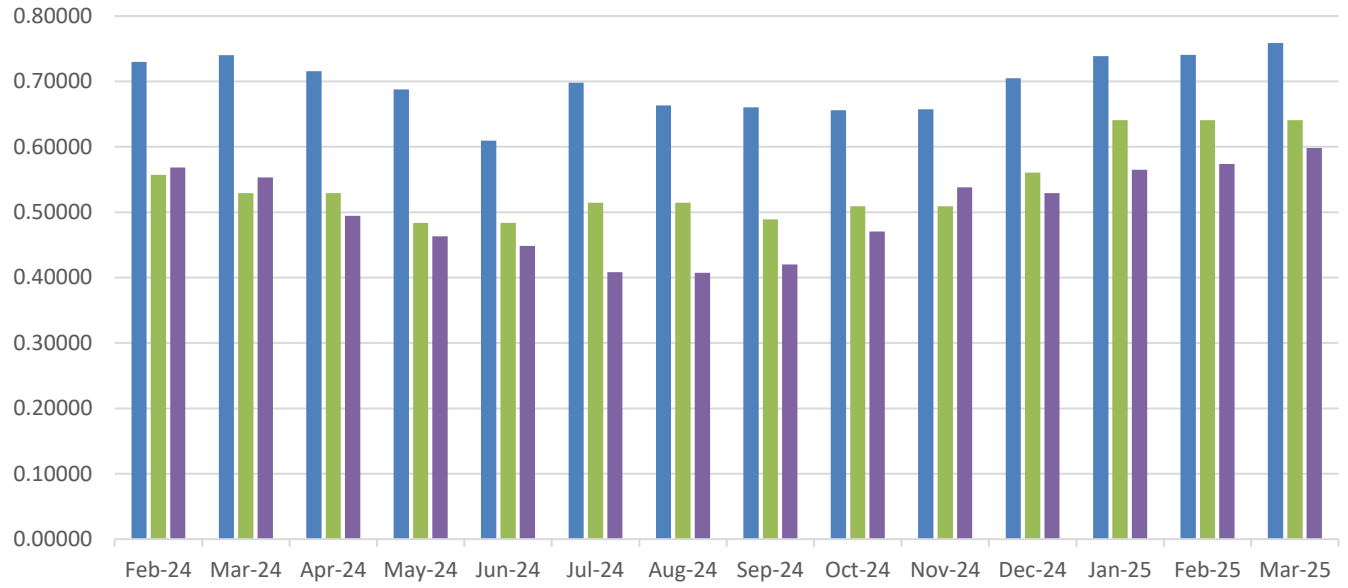


**2025 Residential Rate Summary** (as of the 1<sup>st</sup> day of each month)

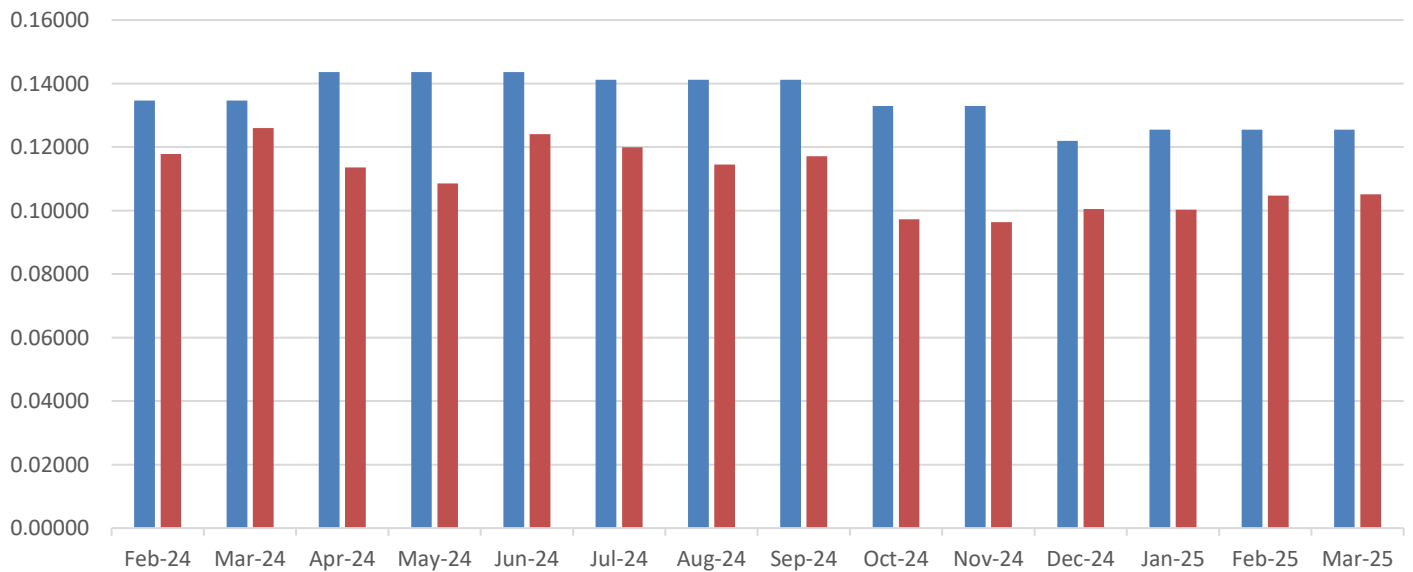
	<b>NWE Gas (therm)</b>	<b>MDU Gas (dkt)</b>	<b>EWM Gas (ccf)</b>	<b>NWE Electric (kwh)</b>	<b>MDU Electric (kwh)</b>
<b>January</b>					
Total Rate	\$ .7388216	\$6.4065	\$.50361	\$.125514	\$.100326
Supply Rate	\$.2248764	\$4.98	\$.18415	\$.068261	\$.02612
Service Chg	\$6.50/month	\$.30/day	\$6.73/month	\$4.20/month	\$.19/day
<b>February</b>					
Total Rate	\$ .7408304	\$6.4065	\$.51162	\$.125514	\$.104746
Supply Rate	\$.2268852	\$4.98	\$.19247	\$.068261	\$.03054
Service Chg	\$6.50/month	\$.30/day	\$6.73/month	\$4.20/month	\$.19/day
<b>March</b>					
Total Rate	\$ .7588055	\$6.4065	\$.53309	\$.125514	\$.105086
Supply Rate	\$.2448603	\$4.98	\$.18766	\$.068261	\$.03088
Service Chg	\$6.50/month	\$.30/day	\$6.73/month	\$4.20/month	\$.19/day
<b>April</b>					
Total Rate	\$	\$	\$	\$	\$
Supply Rate	\$	\$	\$	\$	\$
Service Chg	\$	\$	\$	\$	\$
<b>May</b>					
Total Rate	\$	\$	\$	\$	\$
Supply Rate	\$	\$	\$	\$	\$
Service Chg	\$	\$	\$	\$	\$
<b>June</b>					
Total Rate	\$	\$	\$	\$	\$
Supply Rate	\$	\$	\$	\$	\$
Service Chg	\$	\$	\$	\$	\$
<b>July</b>					
Total Rate	\$	\$	\$	\$	\$
Supply Rate	\$	\$	\$	\$	\$
Service Chg	\$	\$	\$	\$	\$
<b>August</b>					
Total Rate	\$	\$	\$	\$	\$
Supply Rate	\$	\$	\$	\$	\$
Service Chg	\$	\$	\$	\$	\$
<b>September</b>					
Total Rate	\$	\$	\$	\$	\$
Supply Rate	\$	\$	\$	\$	\$
Service Chg	\$	\$	\$	\$	\$
<b>October</b>					
Total Rate	\$	\$	\$	\$	\$
Supply Rate	\$	\$	\$	\$	\$
Service Chg	\$	\$	\$	\$	\$
<b>November</b>					
Total Rate	\$	\$	\$	\$	\$
Supply Rate	\$	\$	\$	\$	\$
Service Chg	\$	\$	\$	\$	\$
<b>December</b>					
Total Rate	\$	\$	\$	\$	\$
Supply Rate	\$	\$	\$	\$	\$
Service Chg	\$	\$	\$	\$	\$

### Total Natural Gas Rate in Therms



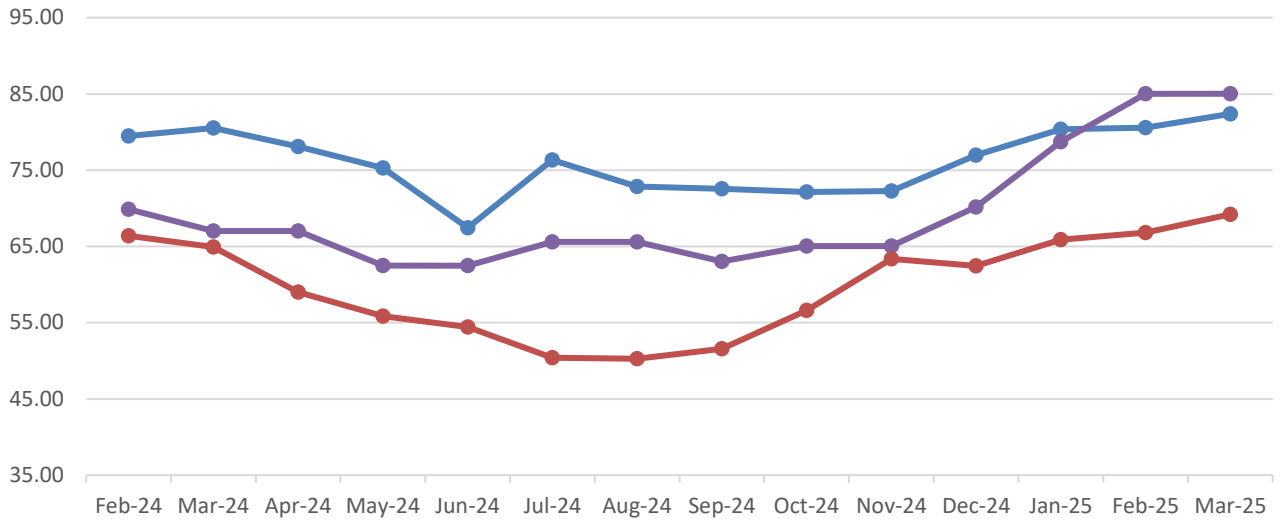
	Feb-24	Mar-24	Apr-24	May-24	Jun-24	Jul-24	Aug-24	Sep-24	Oct-24	Nov-24	Dec-24	Jan-25	Feb-25	Mar-25
NWE	0.72999	0.74039	0.71579	0.68766	0.60938	0.69827	0.66336	0.66063	0.65625	0.65762	0.70474	0.73882	0.74083	0.75881
MDU	0.55735	0.52905	0.52905	0.48355	0.48355	0.51475	0.51475	0.48915	0.50925	0.50925	0.56055	0.64065	0.64065	0.64065
Energy West	0.56849	0.55348	0.49472	0.46299	0.44858	0.40848	0.40717	0.42018	0.47072	0.53812	0.52908	0.56504	0.57403	0.59812

### Total Electric Rate in kWh



	Feb-24	Mar-24	Apr-24	May-24	Jun-24	Jul-24	Aug-24	Sep-24	Oct-24	Nov-24	Dec-24	Jan-25	Feb-25	Mar-25
NWE	0.13461	0.13461	0.14358	0.14358	0.14358	0.14116	0.14116	0.14116	0.13292	0.13292	0.12193	0.12551	0.12551	0.12551
MDU	0.11786	0.12601	0.11363	0.10853	0.12408	0.11992	0.11453	0.11716	0.09728	0.09641	0.10048	0.10033	0.10475	0.10509

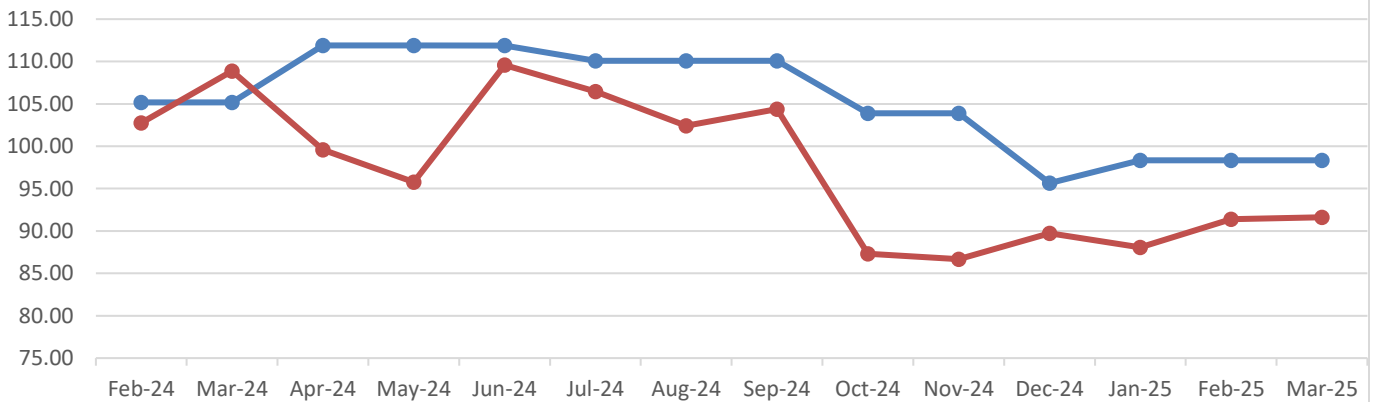
### Average Bill - Natural Gas Assume 30 days/100 therms



	Feb-24	Mar-24	Apr-24	May-24	Jun-24	Jul-24	Aug-24	Sep-24	Oct-24	Nov-24	Dec-24	Jan-25	Feb-25	Mar-25
NWE	79.50	80.54	78.08	75.27	67.44	76.33	72.84	72.56	72.12	72.26	76.97	80.38	80.58	82.38
MDU	69.85	67.02	67.02	62.47	62.47	65.59	65.59	63.03	65.04	65.04	70.17	78.71	85.01	85.01
Energy West	66.40	64.90	59.02	55.85	54.41	50.40	50.27	51.57	56.62	63.36	62.46	65.90	66.80	69.21

NOTE: Starting February 1, 2025, MDU's average gas bill includes an interim rate increase of 27.955% applied to the monthly service charge and the energy charge (Docket 2024.05.061).

### Average Bill - Electric Assume 30 days/750 kwh



	Feb-24	Mar-24	Apr-24	May-24	Jun-24	Jul-24	Aug-24	Sep-24	Oct-24	Nov-24	Dec-24	Jan-25	Feb-25	Mar-25
NWE	105.16	105.16	111.88	111.88	111.88	110.07	110.07	110.07	103.89	103.89	95.65	98.34	98.34	98.34
MDU	102.76	108.87	99.59	95.76	109.58	106.46	102.41	104.39	87.33	86.67	89.73	88.06	91.38	91.63

## **NOTES AND DISCLAIMERS:**

This document reflects rates shown on tariffs filed and processed for each utility as of the first day of the month. Mid-month changes are not reflected on this document until the subsequent month.

Gas supply rates for each company may include transportation and storage costs from other parties.

**Montana Dakota Utilities (MDU) electric** power supply costs consist of fuel used in its generating stations, energy purchases from MISO, capacity purchases, generating station pipeline charges, and reagent costs.

**NorthWestern Energy (NWE) electric** supply rate includes the annual variable costs associated with the production and procurement of energy supplies which is calculated annually through its Power Costs and Credit Adjustment Mechanism (“PCCAM”). In addition, it includes the recovery of certain fixed costs approved in its last electric general rate case.

**NWE gas** supply rate includes the cost of gas and gas transportation from other suppliers, as well as the Battle Creek, Bear Paw, and Devon revenue requirements.

**Tax tracking adjustments** are included in the total rate for NWE gas and NWE electric; and are included in the average bill for MDU gas, MDU electric, and Energy West.

## **SOURCES:**

NWE: <https://www.northwesternenergy.com/billing-payment/rates-tariffs/rates-tariffs-montana>

MDU: <https://www.montana-dakota.com/rates-services/rates-tariffs/>

Energy West: <https://www.ewst.com/areas-we-serve/great-falls/rates/>