



400 North Fourth Street
Bismarck, ND 58501
(701) 222-7900

February 27, 2015

Ms. Kate Whitney, Administrator
Utility Division
Montana Public Service Commission
1701 Prospect Avenue
Helena, MT 59620

RE: Annual Electric Reliability Report-2014
ARM 38.5.8619

Dear Ms. Whitney:

Montana-Dakota Utilities Co., a Division of MDU Resources Group, Inc. herewith submits an original and ten copies of its Annual Report of Montana Electric Reliability Indices pursuant to ARM 38.5.8619.

The Reliability Indices provided in this report include the System Average Interruption Frequency Index (SAIFI), the System Average Interruption Duration Index (SAIDI) and the Customer Average Interruption Duration Index (CAIDI) for the state of Montana and by major district served by Montana-Dakota in Montana for calendar year 2014. Historical data for calendar years 2013 and 2012 is also included. All indices in this report include outage data for both the distribution system and the transmission system and the SAIDI and CAIDI indices are reported in minutes.

A graphical presentation of the SAIFI, SAIDI and CAIDI indices for 2012-2014 is provided in Attachment A, pages 1 and 2 with a categorization of the causes associated with service interruptions in 2012 through 2014 shown on Attachment A, page 3. In 2014, the outage numbers are attributed primarily to storms throughout the service territory and planned outages necessary to replace regulator bypasses, cutouts and circuits in substations and to replace poles, transformers and other equipment. Please refer to Attachment B for the index data.

In calendar years 2012 through 2014 Montana-Dakota did not have an outage on the distribution or transmission system that was classified as a major storm event where more than 10% of a major town's circuits were affected. However, storms did impact the system. An explanation of storm related outages not classified as major storm events is provided in Attachment B, page 2

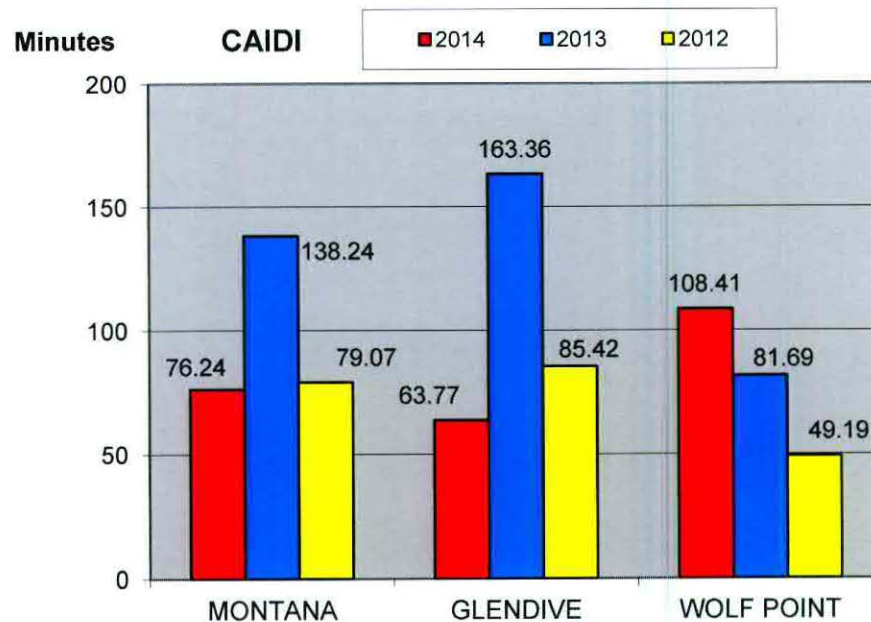
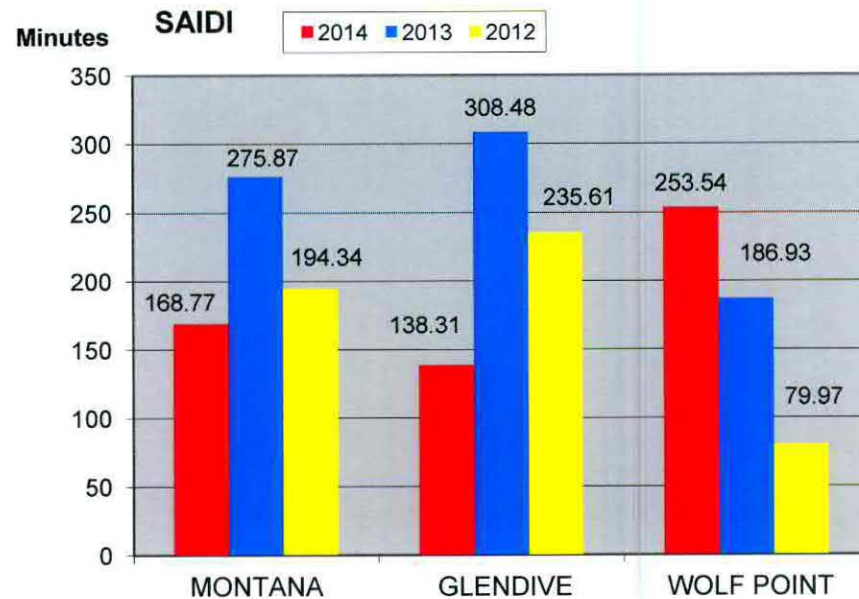
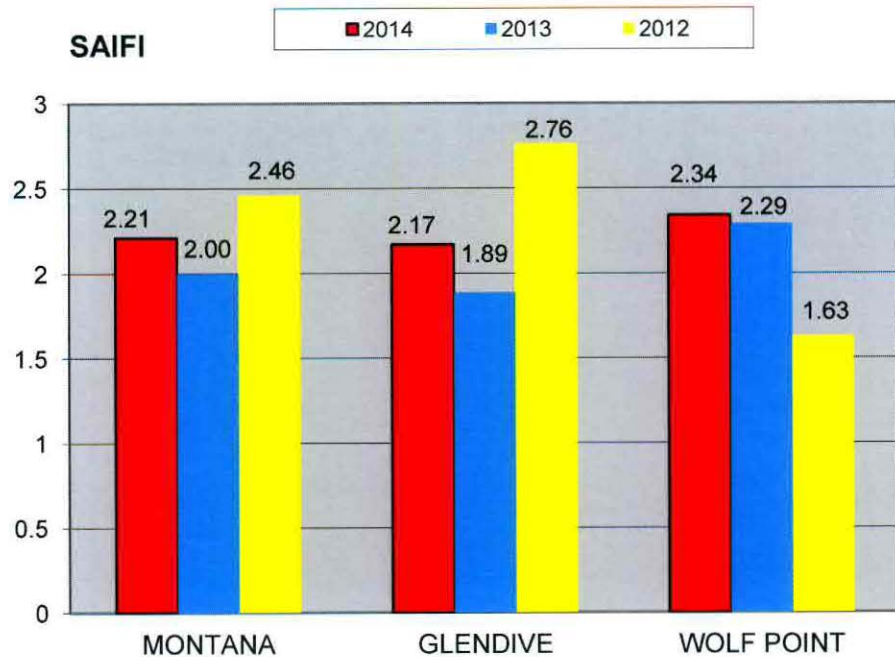
Please contact me with any questions regarding this report

Sincerely,

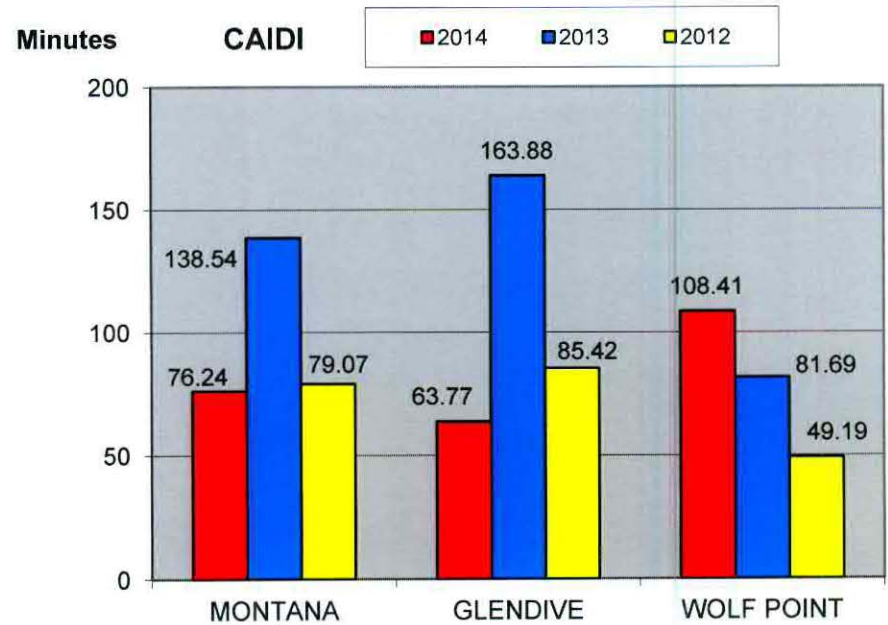
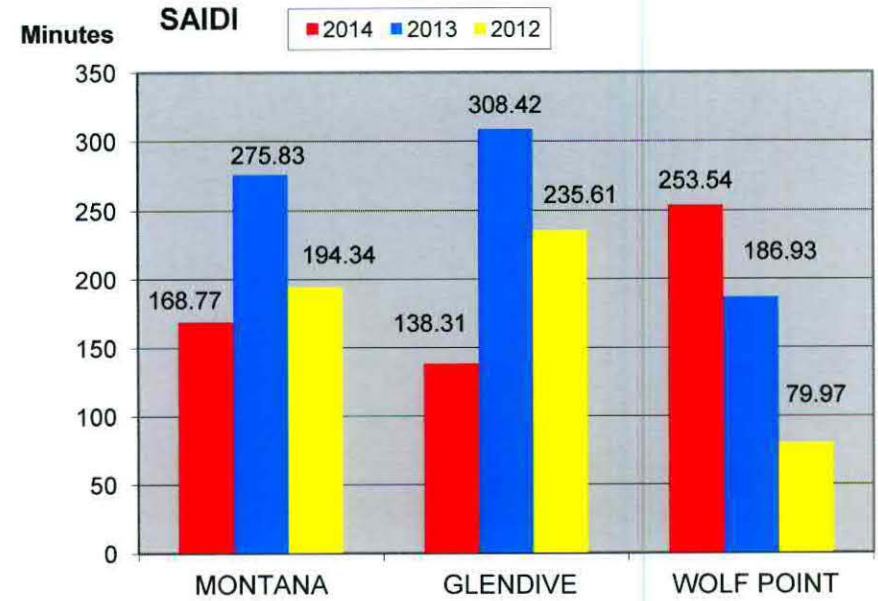
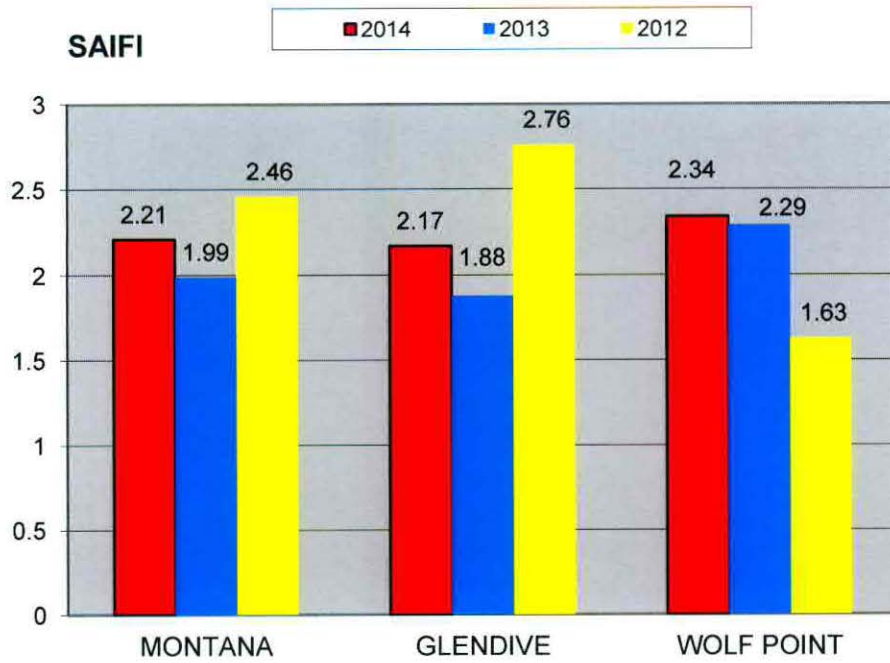
A handwritten signature in dark ink, appearing to read 'Tamie A. Aberle', is written over a light blue horizontal line.

Tamie A. Aberle
Director of Regulatory Affairs

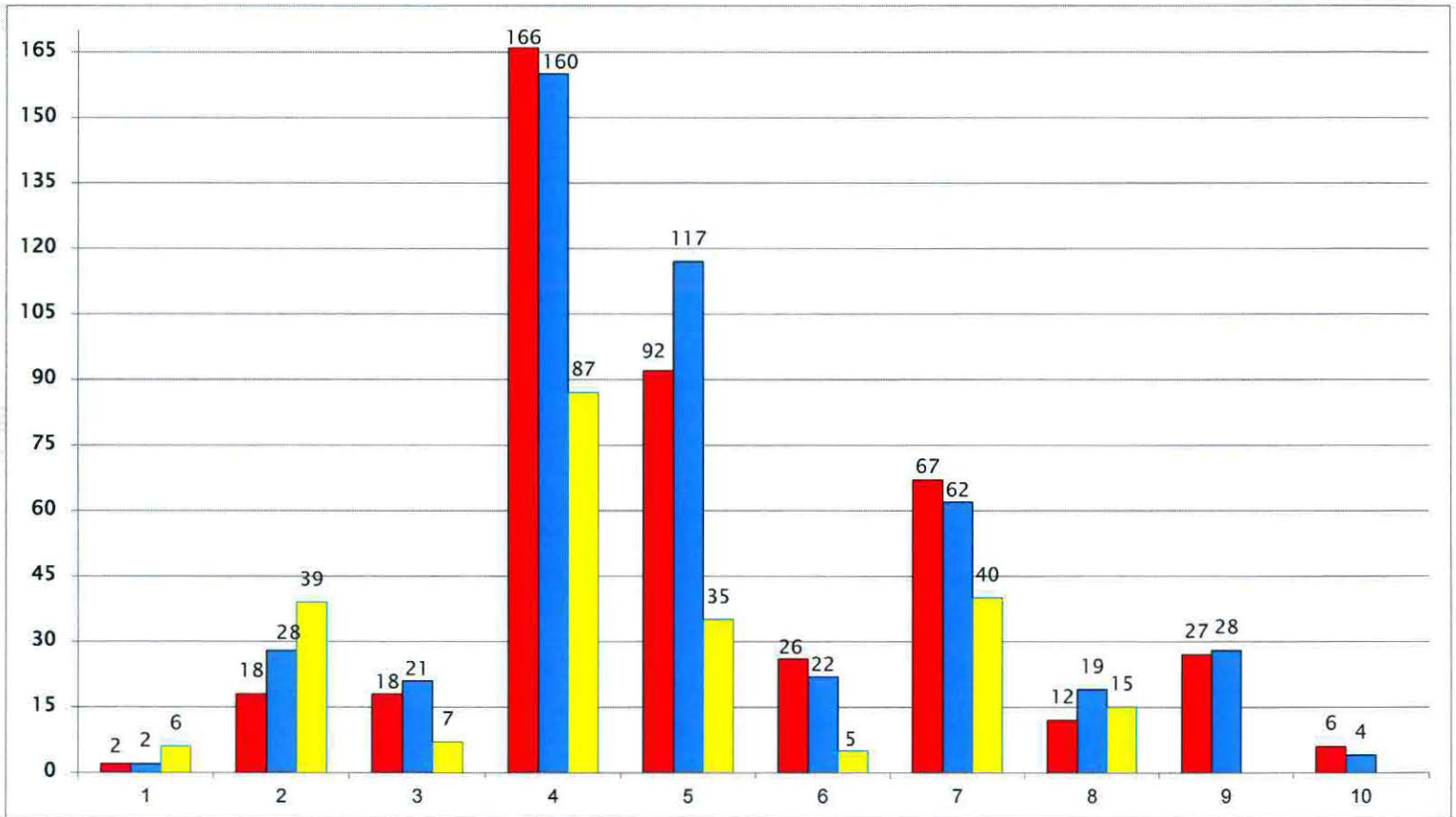
**MONTANA-DAKOTA UTILITIES CO.
RELIABILITY INDEX WITH IDENTIFIED STORM EVENT(S)
ELECTRIC UTILITY-MONTANA
2012-2014**



**MONTANA-DAKOTA UTILITIES CO.
RELIABILITY INDEX WITHOUT IDENTIFIED STORM EVENT(S)
ELECTRIC UTILITY-MONTANA
2012-2014**



**MONTANA-DAKOTA UTILITIES CO.
ELECTRIC UTILITY MONTANA
OUTAGES BY CAUSE
2012-2014**



Distribution and Transmission Outages:

	2014	2013	2012 1/
1) Customer	2	2	6
2) Equipment	18	28	39
3) Other	18	21	7
4) Planned	166	160	87
5) Storms	92	117	35
6) Trees/Vegetation	26	22	5
7) Unknown	67	62	40
8) Wildlife	12	19	15
9) Vehicle Collison	27	28	
10) Improper Construction/Dig In	6	4	
	434	463	234

1/In calendar year 2012, Categories 9) Vehicle Collison and 10) Improper Construction/Dig were previously reported in the "Other" category.

**MONTANA-DAKOTA UTILITIES CO.
ANNUAL ELECTRIC RELIABILITY REPORT-MONTANA
CALENDAR YEAR 2014
MONTANA RULE 38.5.8619**

	<u>Montana</u>			<u>Glendive District</u>			<u>Wolf Point District</u>		
	<u>2014</u>	<u>2013</u>	<u>2012</u>	<u>2014</u>	<u>2013</u>	<u>2012</u>	<u>2014</u>	<u>2013</u>	<u>2012</u>
Reliability Index with Identified Storm Event(s)									
SAIFI (System Average Interruption Frequency Index)	2.21	2.00	2.46	2.17	1.89	2.76	2.34	2.29	1.63
SAIDI (System Average Interruption Duration Index)	168.77	275.87	194.34	138.31	308.48	235.61	253.54	186.93	79.97
CAIDI (Customer Average Interruption Duration Index)	76.24	138.24	79.07	63.77	163.36	85.42	108.41	81.69	49.19

	<u>Montana</u>			<u>Glendive District</u>			<u>Wolf Point District</u>		
	<u>2014</u>	<u>2013</u>	<u>2012</u>	<u>2014</u>	<u>2013</u>	<u>2012</u>	<u>2014</u>	<u>2013</u>	<u>2012</u>
Reliability Index-Without Identified Storm Event(s)									
SAIFI (System Average Interruption Frequency Index)	2.21	1.99	2.46	2.17	1.88	2.76	2.34	2.29	1.63
SAIDI (System Average Interruption Duration Index)	168.77	275.83	194.34	138.31	308.42	235.61	253.54	186.93	79.97
CAIDI (Customer Average Interruption Duration Index)	76.24	138.54	79.07	63.77	163.88	85.42	108.41	81.69	49.19

Outages caused by Major Storms/Events: None

Montana-Dakota Utilities Co.
Electric Utility – Montana
Outage Data Information
2014

The following storm outages, while not classified as a major storm events by definition, did affect reliability indices in calendar year 2014. In addition to the specific storm related outages noted below, storm related outages occurred on the following dates: 1/3, 1/6 and 6/18 affecting the Montana system.

Specific storm related outages on the transmission system included:

Baker-Glendive Turbine 60 KV line

- 03/31/14-Storm related weather and wind
- 04/01/14-Storm related weather and wind
- 06/26/14-Storm related weather and wind
- 06/26/14-Storm related weather and wind
- 09/22/14-Storm related weather and wind

Culbertson-Lewis & Clark 60 KV line

- 06/09/2014-Storm related weather, wind
- 11/16/2014-Storm related weather and wind

Glendive-Glendive Turbine Jct. 60 KV line

- 03/31/2014-Storm related weather, wind
- 08/15/2014-Storm related weather, wind

Glendive-Lewis & Clark 60 KV line

- 07/24/2014-Storm related weather and wind

Glendive-Medora 60 KV line

- 01/26/2014-Storm related weather and wind
- 03/31/2014-Storm related weather and wind

Plentywood-Poplar 60 KV line

- 06/01/2014-Storm related weather and wind

Poplar-Brockton 33 KV line

- 05/08/2014-Storm related weather and wind